

SEP15 Rabbit mAb

Catalog No: #52569

Package Size: #52569-1 50ul #52569-2 100ul

Orders: order@signalwayantibody.com

Support: tech@signalwayantibody.com

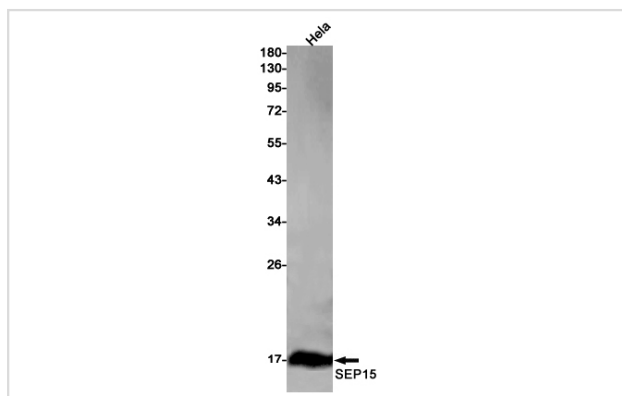
Description

Product Name	SEP15 Rabbit mAb
Host Species	Recombinant Rabbit
Clonality	Monoclonal antibody
Clone No.	S04-4D8
Isotype	Rabbit IgG
Purification	Affinity Purified
Applications	WB
Species Reactivity	Human,Mouse,Rat
Immunogen Description	A synthetic peptide of mouse SEP15
Conjugates	Unconjugated
Modification	Unmodification
Other Names	Sep15; 9430015P09Rik
Accession No.	Swiss-Prot:Q9ERR7GeneID:93684
Uniprot	Q9ERR7
GeneID	93684
Calculated MW	Calculated MW: 18 kDa; Observed MW: 18 kDa
Concentration	0.3 mg/ml
Formulation	50mM Tris-Glycine(pH 7.4), 0.15M NaCl, 40% Glycerol, 0.01% Sodium azide and 0.05% BSA
Storage	Store at 4°C short term. Aliquot and store at -20°C long term. Avoid freeze/thaw cycles.

Application Details

WB: 1/1000-1/2000

Images



Western blot detection of 44089 in HeLa cell lysates using SEP15 Rabbit mAb(1:1000 diluted).Predicted band size:18kDa.Observed band size:18kDa.

Background

Swiss-Prot Acc.Q9ERR7. May be involved in redox reactions associated with the formation of disulfide bonds. May contribute to the quality control of protein folding in the endoplasmic reticulum .

Note: This product is for in vitro research use only