

Septin 7 Rabbit mAb

Catalog No: #52570

Package Size: #52570-1 50ul #52570-2 100ul

Orders: order@signalwayantibody.com

Support: tech@signalwayantibody.com

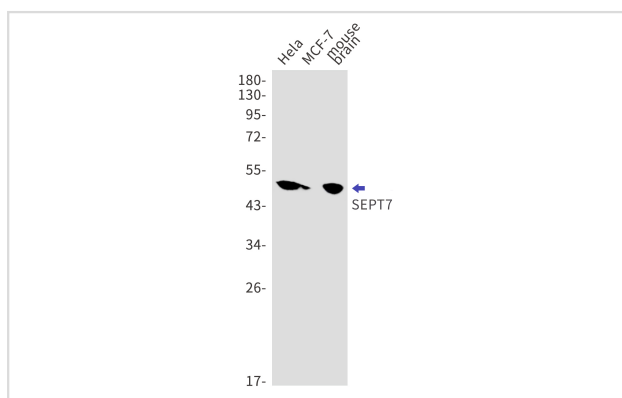
Description

Product Name	Septin 7 Rabbit mAb
Host Species	Recombinant Rabbit
Clonality	Monoclonal antibody
Clone No.	S09-6A1
Isotype	Rabbit IgG
Purification	Affinity Purified
Applications	WB
Species Reactivity	Human,Mouse,Rat
Immunogen Description	Recombinant protein of human SEPT7
Conjugates	Unconjugated
Modification	Unmodification
Other Names	CDC3; CDC10; SEPT7A; NBLA02942
Accession No.	Swiss-Prot:Q16181GeneID:989
Uniprot	Q16181
GeneID	989
Calculated MW	Calculated MW: 51 kDa; Observed MW: 51 kDa
Concentration	0.3 mg/ml
Formulation	50mM Tris-Glycine(pH 7.4), 0.15M NaCl, 40% Glycerol, 0.01% Sodium azide and 0.05% BSA
Storage	Store at 4°C short term. Aliquot and store at -20°C long term. Avoid freeze/thaw cycles.

Application Details

WB: 1/1000;

Images



Western blot detection of SEPT7 in HeLa, MCF-7 and mouse brain lysates using SEPT7 antibody. Predicted band size: 51 kDa. Observed band size: 51 kDa.

Background

Swiss-Prot Acc.Q16181.Filament-forming cytoskeletal GTPase. Required for normal organization of the actin cytoskeleton. Required for normal progress through mitosis. Involved in cytokinesis. Required for normal association of CENPE with the kinetochore. Plays a role in ciliogenesis and collective cell movements. Forms a filamentous structure with SEPT12, SEPT6, SEPT2 and probably SEPT4 at the sperm annulus which is required for the structural integrity and motility of the sperm tail during postmeiotic differentiation (PubMed:25588830).

Note: This product is for in vitro research use only