

SGSM1 Rabbit mAb

Catalog No: #52574

Package Size: #52574-1 50ul #52574-2 100ul

Orders: order@signalwayantibody.com

Support: tech@signalwayantibody.com

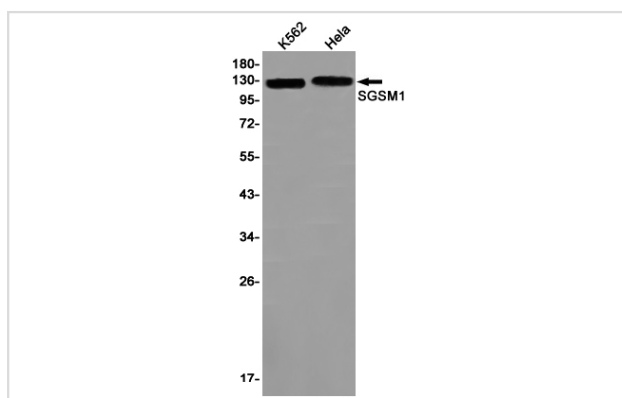
Description

Product Name	SGSM1 Rabbit mAb
Host Species	Recombinant Rabbit
Clonality	Monoclonal antibody
Clone No.	S07-5H6
Isotype	Rabbit IgG
Purification	Affinity Purified
Applications	WB IF
Species Reactivity	Human,Mouse,Rat
Immunogen Description	A synthetic peptide of human SGSM1
Conjugates	Unconjugated
Modification	Unmodification
Other Names	RUTBC2
Accession No.	Swiss-Prot:Q2NKQ1 GenelD:129049
Uniprot	Q2NKQ1
GenelD	129049
Calculated MW	Calculated MW: 130 kDa; Observed MW: 130 kDa
Concentration	0.3 mg/ml
Formulation	50mM Tris-Glycine(pH 7.4), 0.15M NaCl, 40% Glycerol, 0.01% Sodium azide and 0.05% BSA
Storage	Store at 4°C short term. Aliquot and store at -20°C long term. Avoid freeze/thaw cycles.

Application Details

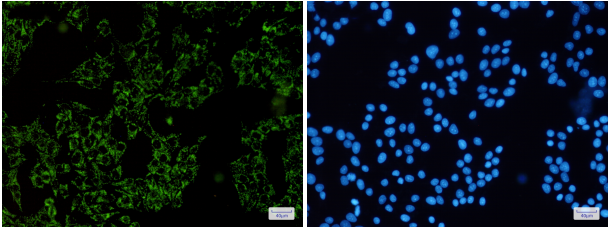
WB: 1/1000; ICC/IF: 1/20-1/100;

Images



Western blot detection of SGSM1 in K562, HeLa cell lysates using SGSM1 Rabbit mAb (1:1000 diluted). Predicted band size: 130 kDa. Observed band size: 130 kDa.

Immunocytochemistry of SGS1 (green) in HeLa cells using SGS1 Rabbit mAb at dilution 1/50, and DAPI (blue)



Background

Swiss-Prot Acc.Q2NKQ1. Interacts with numerous Rab family members, functioning as Rab effector for some, and as GTPase activator for others. Promotes GTP hydrolysis by RAB34 and RAB36. Probably functions as GTPase effector with RAB9A and RAB9B; does not stimulate GTP hydrolysis with RAB9A and RAB9B.

Note: This product is for in vitro research use only