

SHP1 Rabbit mAb

Catalog No: #52576

Package Size: #52576-1 50ul #52576-2 100ul

Orders: order@signalwayantibody.com

Support: tech@signalwayantibody.com

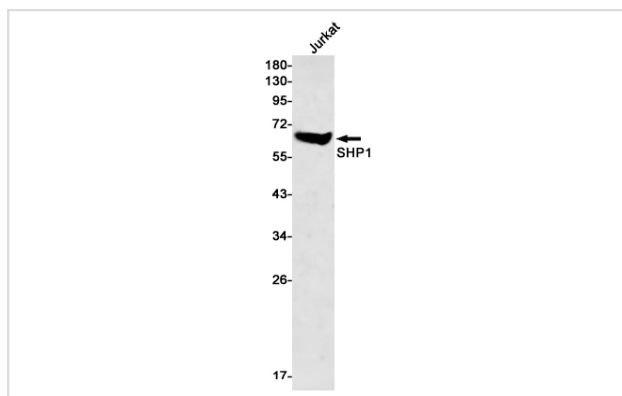
Description

Product Name	SHP1 Rabbit mAb
Host Species	Recombinant Rabbit
Clonality	Monoclonal antibody
Clone No.	S06-4C8
Isotype	Rabbit IgG
Purification	Affinity Purified
Applications	WB IHC
Species Reactivity	Human
Immunogen Description	A synthetic peptide of human SHP1
Conjugates	Unconjugated
Modification	Unmodification
Other Names	HCP; HCPH; SHP1; SHP-1; HPTP1C; PTP-1C; SHP-1L; SH-PTP1
Accession No.	Swiss-Prot:P29350GenelD:5777
Uniprot	P29350
GenelD	5777
Calculated MW	Calculated MW: 68 kDa; Observed MW: 68 kDa
Concentration	0.3 mg/ml
Formulation	50mM Tris-Glycine(pH 7.4), 0.15M NaCl, 40% Glycerol, 0.01% Sodium azide and 0.05% BSA
Storage	Store at 4°C short term. Aliquot and store at -20°C long term. Avoid freeze/thaw cycles.

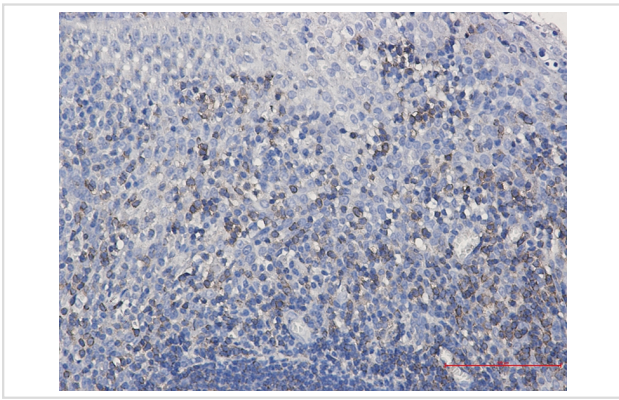
Application Details

WB: 1/1000-1/5000; IHC: 1/200-1/500;

Images



Western blot detection of SHP1 in Jurkat cell lysates using SHP1 Rabbit mAb(1:500 diluted). Predicted band size:68kDa.Observed band size:68kDa.



Immunohistochemistry of SHP1 in paraffin-embedded Human tonsil using SHP1 Rabbit mAb at dilution 1/50

Background

Swiss-Prot Acc.P29350.Modulates signaling by tyrosine phosphorylated cell surface receptors such as KIT and the EGF receptor/EGFR. The SH2 regions may interact with other cellular components to modulate its own phosphatase activity against interacting substrates. Together with MTUS1, induces UBE2V2 expression upon angiotensin II stimulation. Plays a key role in hematopoiesis.

Note: This product is for in vitro research use only