

## SNAP25 Rabbit mAb

Catalog No: #52584

Package Size: #52584-1 50ul #52584-2 100ul

Orders: order@signalwayantibody.com

Support: tech@signalwayantibody.com

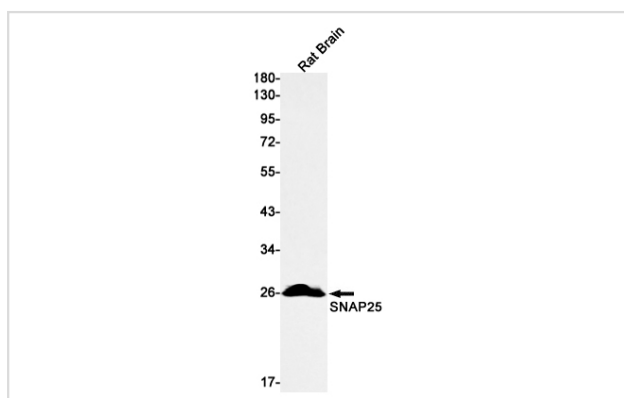
## Description

Product Name	SNAP25 Rabbit mAb
Host Species	Recombinant Rabbit
Clonality	Monoclonal antibody
Clone No.	S01-1C6
Isotype	Rabbit IgG
Purification	Affinity Purified
Applications	WB
Species Reactivity	Human,Mouse,Rat
Immunogen Description	A synthetic peptide of human SNAP25
Conjugates	Unconjugated
Modification	Unmodification
Other Names	SUP; RIC4; SEC9; SNAP; CMS18; RIC-4; SNAP-25; bA416N4.2; dJ1068F16.2
Accession No.	Swiss-Prot:P60880GenelD:6616
Uniprot	P60880
GenelD	6616
Calculated MW	Calculated MW: 23 kDa; Observed MW: 25 kDa
Concentration	0.3 mg/ml
Formulation	50mM Tris-Glycine(pH 7.4), 0.15M NaCl, 40% Glycerol, 0.01% Sodium azide and 0.05% BSA
Storage	Store at 4°C short term. Aliquot and store at -20°C long term. Avoid freeze/thaw cycles.

## Application Details

WB: 1/1000

## Images



Western blot detection of SNAP25 in Rat Brain lysates using SNAP25 Rabbit mAb(1:1000 diluted). Predicted band size:23kDa.Observed band size:25kDa.

## Background

---

Swiss-Prot Acc.P60880.t-SNARE involved in the molecular regulation of neurotransmitter release. May play an important role in the synaptic function of specific neuronal systems. Associates with proteins involved in vesicle docking and membrane fusion. Regulates plasma membrane recycling through its interaction with CENPF. Modulates the gating characteristics of the delayed rectifier voltage-dependent potassium channel KCNB1 in pancreatic beta cells.

---

Note: This product is for in vitro research use only