

Pulmonary Surfactant Associated Protein D Rabbit mAb

Catalog No: #52605

Orders: order@signalwayantibody.com

Package Size: #52605-1 50ul #52605-2 100ul

Support: tech@signalwayantibody.com

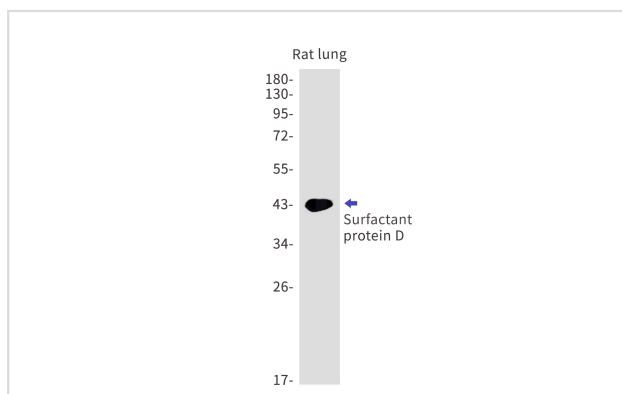
Description

Product Name	Pulmonary Surfactant Associated Protein D Rabbit mAb
Host Species	Recombinant Rabbit
Clonality	Monoclonal antibody
Clone No.	S06-2B1
Isotype	Rabbit IgG
Purification	Affinity Purified
Applications	WB
Species Reactivity	Mouse,Rat
Immunogen Description	Recombinant protein of mouse Surfactant protein D
Conjugates	Unconjugated
Modification	Unmodification
Other Names	SP-D; Sfpd; Sftp4; A1573415
Accession No.	Swiss-Prot:P50404GeneID:20390
Uniprot	P50404
GeneID	20390
Calculated MW	Calculated MW: 38 kDa; Observed MW: 43 kDa
Concentration	0.3 mg/ml
Formulation	50mM Tris-Glycine(pH 7.4), 0.15M NaCl, 40% Glycerol, 0.01% Sodium azide and 0.05% BSA
Storage	Store at 4°C short term. Aliquot and store at -20°C long term. Avoid freeze/thaw cycles.

Application Details

WB: 1/1000;

Images



Western blot detection of Surfactant protein D in Rat lung cell lysates using Surfactant protein D Rabbit mAb(1:1000 diluted). Predicted band size:38kDa.Observed band size:43kDa.

Background

Swiss-Prot Acc.P50404. Contributes to the lung's defense against inhaled microorganisms, organic antigens and toxins. Interacts with compounds such as bacterial lipopolysaccharides, oligosaccharides and fatty acids and modulates leukocyte action in immune response. May participate in the extracellular reorganization or turnover of pulmonary surfactant. Binds strongly maltose residues and to a lesser extent other alpha-glucosyl moieties. Miscellaneous Pulmonary surfactant consists of 90% lipid and 10% protein. There are 4 surfactant-associated proteins: 2 collagenous, carbohydrate-binding glycoproteins (SP-A and SP-D) and 2 small hydrophobic proteins (SP-B and SP-C).

Note: This product is for in vitro research use only