

## Syntaxin 16 Rabbit mAb

Catalog No: #52607

Package Size: #52607-1 50ul #52607-2 100ul

Orders: order@signalwayantibody.com

Support: tech@signalwayantibody.com

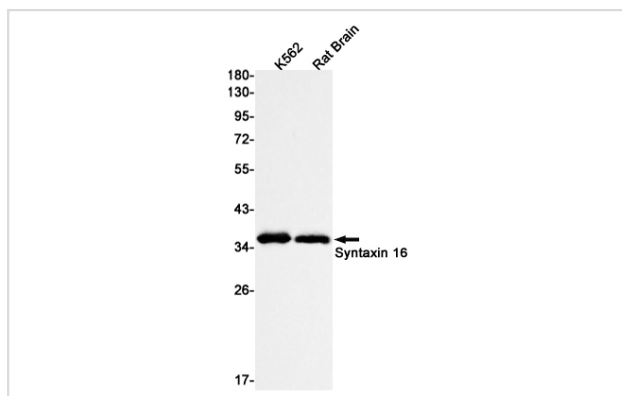
## Description

Product Name	Syntaxin 16 Rabbit mAb
Host Species	Recombinant Rabbit
Clonality	Monoclonal antibody
Clone No.	S09-9A8
Isotype	Rabbit IgG
Purification	Affinity Purified
Applications	WB
Species Reactivity	Human,Mouse,Rat
Immunogen Description	A synthetic peptide of human Syntaxin 16
Conjugates	Unconjugated
Modification	Unmodification
Other Names	SYN16
Accession No.	Swiss-Prot:O14662GeneID:8675
Uniprot	O14662
GeneID	8675
Calculated MW	Calculated MW: 37 kDa; Observed MW: 37 kDa
Concentration	0.3 mg/ml
Formulation	50mM Tris-Glycine(pH 7.4), 0.15M NaCl, 40% Glycerol, 0.01% Sodium azide and 0.05% BSA
Storage	Store at 4°C short term. Aliquot and store at -20°C long term. Avoid freeze/thaw cycles.

## Application Details

WB: 1/1000-1/5000

## Images



Western blot detection of Syntaxin 16 in K562,Rat Brain lysates using Syntaxin 16 Rabbit mAb(1:1000 diluted).Predicted band size:37kDa.Observed band size:37kDa.

## Background

---

Swiss-Prot Acc.O14662.SNARE involved in vesicular transport from the late endosomes to the trans-Golgi network.

---

Note: This product is for in vitro research use only