

Synaptophysin Like Protein 1 Rabbit mAb

Catalog No: #52609

Package Size: #52609-1 50ul #52609-2 100ul

Orders: order@signalwayantibody.com

Support: tech@signalwayantibody.com

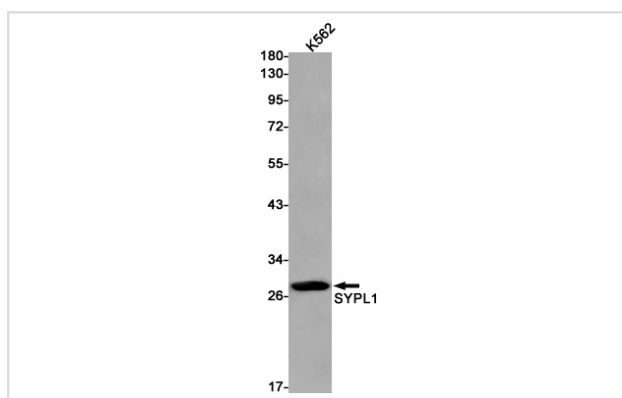
Description

Product Name	Synaptophysin Like Protein 1 Rabbit mAb
Clone No.	S02-9K7
Isotype	Rabbit IgG
Purification	Affinity Purified
Applications	WB IHC
Species Reactivity	Human
Immunogen Description	Recombinant protein of human SYPL1
Conjugates	Unconjugated
Modification	Unmodification
Other Names	Pantophysin; SYPL1
Accession No.	Swiss-Prot:Q16563GeneID:6856
Uniprot	Q16563
GeneID	6856
Calculated MW	Calculated MW: 29 kDa; Observed MW: 29 kDa
Concentration	0.3 mg/ml
Formulation	50mM Tris-Glycine(pH 7.4), 0.15M NaCl, 40% Glycerol, 0.01% Sodium azide and 0.05% BSA
Storage	Store at 4°C short term. Aliquot and store at -20°C long term. Avoid freeze/thaw cycles.

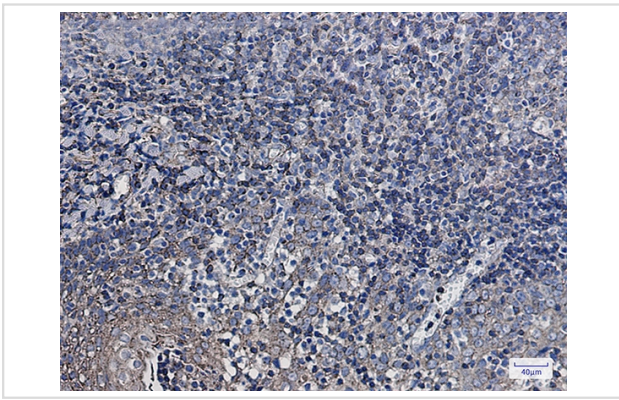
Application Details

WB: 1/1000; IHC: 1/20-1/100;

Images



Western blot detection of SYPL1 in K562 cell lysates using SYPL1 Rabbit mAb(1:1000 diluted). Predicted band size:29kDa.Observed band size:29kDa.



Immunohistochemistry of SYPL1 in paraffin-embedded Human tonsil using SYPL1 Rabbit mAb at dilution 1/20

Background

Swiss-Prot Acc.Q16563.Synaptophysin-like protein 1

Note: This product is for in vitro research use only