

## Phospho-Tau (Ser202) Rabbit mAb

Catalog No: #52610

Package Size: #52610-1 50ul #52610-2 100ul

Orders: order@signalwayantibody.com

Support: tech@signalwayantibody.com

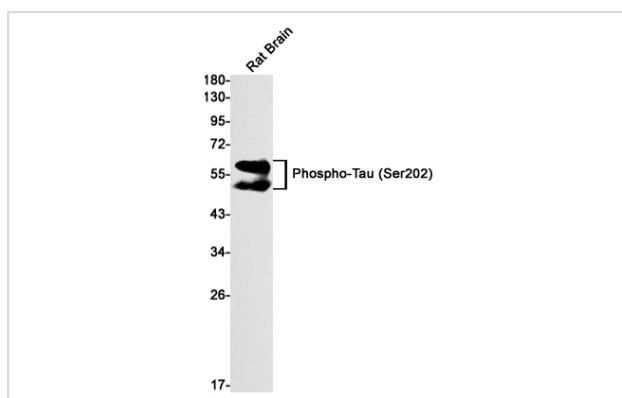
## Description

Product Name	Phospho-Tau (Ser202) Rabbit mAb
Host Species	Recombinant Rabbit
Clonality	Monoclonal antibody
Clone No.	S01-5A7
Isotype	Rabbit IgG
Purification	Affinity Purified
Applications	WB
Species Reactivity	Human,Mouse,Rat
Immunogen Description	A synthetic phosphopeptide corresponding to residues surrounding Ser202 of human Tau
Conjugates	Unconjugated
Modification	Phosphorylated
Other Names	TAU; MSTD; PPND; DDPAC; MAPTL; MTBT1; MTBT2; FTDP-17; PPP1R103
Accession No.	Swiss-Prot:P10636GenelD:4137
Uniprot	P10636
GenelD	4137
Calculated MW	Calculated MW: 79 kDa; Observed MW: 50-80 kDa
Concentration	0.3 mg/ml
Formulation	50mM Tris-Glycine(pH 7.4), 0.15M NaCl, 40% Glycerol, 0.01% Sodium azide and 0.05% BSA
Storage	Store at 4°C short term. Aliquot and store at -20°C long term. Avoid freeze/thaw cycles.

## Application Details

WB: 1/1000;

## Images



Western blot detection of Phospho-Tau (Ser202) in Rat Brain lysates using Phospho-Tau (Ser202) Rabbit mAb(1:1000 diluted). Predicted band size:79kDa.Observed band size: 50-80kDa.

## Background

---

Swiss-Prot Acc.P10636.Promotes microtubule assembly and stability, and might be involved in the establishment and maintenance of neuronal polarity. The C-terminus binds axonal microtubules while the N-terminus binds neural plasma membrane components, suggesting that tau functions as a linker protein between both. Axonal polarity is predetermined by TAU/MAPT localization (in the neuronal cell) in the domain of the cell body defined by the centrosome. The short isoforms allow plasticity of the cytoskeleton whereas the longer isoforms may preferentially play a role in its stabilization.

---

Note: This product is for in vitro research use only