

TDP 43 Rabbit mAb

Catalog No: #52614

Package Size: #52614-1 50ul #52614-2 100ul

Orders: order@signalwayantibody.com

Support: tech@signalwayantibody.com

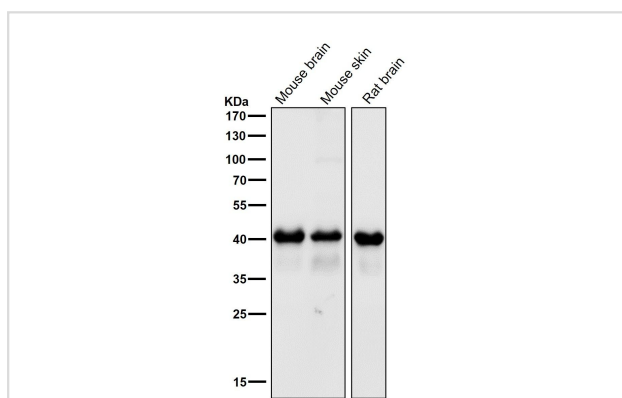
Description

Product Name	TDP 43 Rabbit mAb
Clone No.	S02-2A8
Isotype	Rabbit IgG
Purification	Affinity-chromatography
Applications	WB,IHC,ICC/IF,IP,FC
Species Reactivity	Human,Mouse,Rat
Immunogen Description	A synthesized peptide derived from human TDP43
Conjugates	Unconjugated
Modification	Unmodification
Other Names	ALS10; TDP-43
Accession No.	Swiss-Prot:Q13148GeneID:23435
Uniprot	Q13148
GeneID	23435
Calculated MW	Calculated MW: 45 kDa; Observed MW: 45 kDa
Concentration	0.8 mg/ml
Formulation	Rabbit IgG in phosphate buffered saline , pH 7.4, 150mM NaCl, 0.02% sodium azide and 50% glycerol.
Storage	Store at 4°C short term. Aliquot and store at -20°C long term. Avoid freeze/thaw cycles.

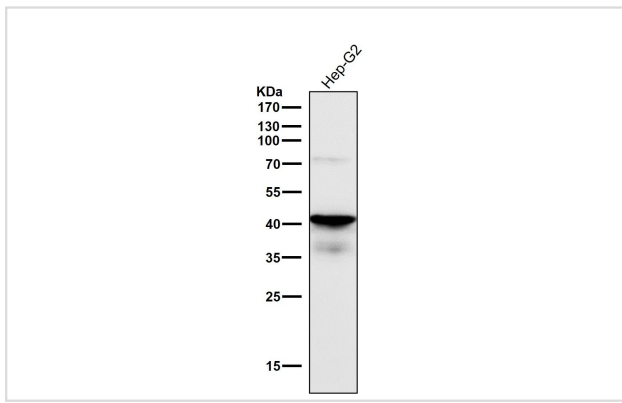
Application Details

WB 1:500~1:2000 IHC 1:50~1:200 ICC/IF 1:50~1:200 IP 1:50 FC 1:200

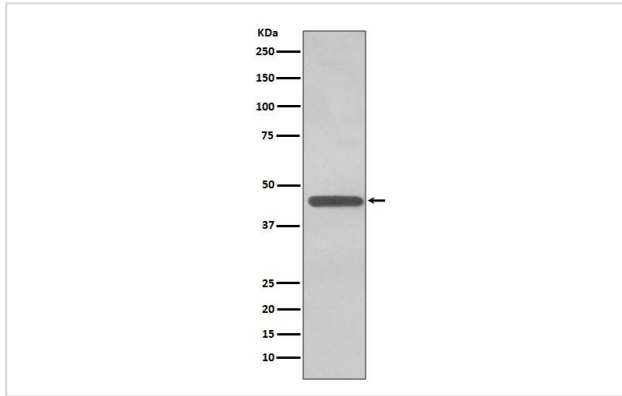
Images



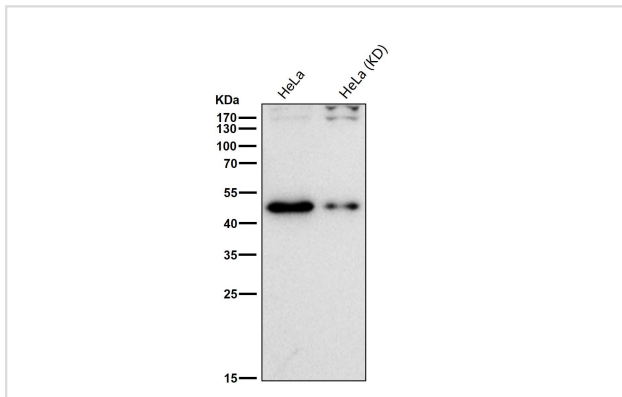
All lanes use the Antibody at 1:4K dilution for 1 hour at room temperature.



All lanes use the Antibody at 1:4K dilution for 1 hour at room temperature.



Western blot analysis of TDP43 expression in K562 cell lysate.



All lanes use the Antibody at 1:1K dilution for 1 hour at room temperature.

Background

TDP43 (TAR DNA-binding protein 43) is involved in transcriptional regulation and exon splicing. While normal TDP43 is a nuclear protein, pathological TDP43 is a component of insoluble aggregates in patients with frontotemporal lobar degeneration (FTLD) and amyotrophic lateral sclerosis (ALS).

Note: This product is for in vitro research use only