

Transmembrane Protein 30B Rabbit mAb

Catalog No: #52621

Package Size: #52621-1 50ul #52621-2 100ul

Orders: order@signalwayantibody.com

Support: tech@signalwayantibody.com

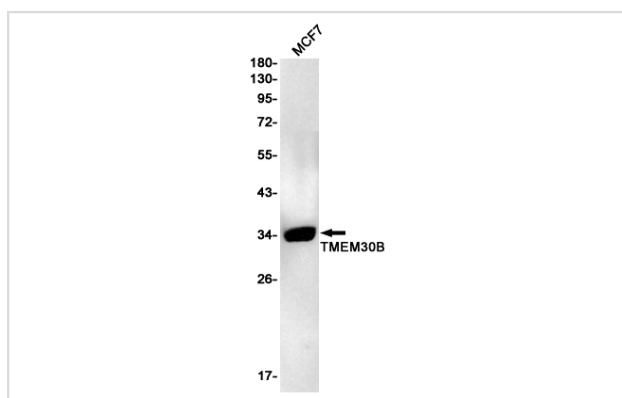
Description

Product Name	Transmembrane Protein 30B Rabbit mAb
Host Species	Recombinant Rabbit
Clonality	Monoclonal antibody
Clone No.	S09-9G7
Isotype	Rabbit IgG
Purification	Affinity Purified
Applications	WB
Species Reactivity	Human,Mouse,Rat
Immunogen Description	Recombinant protein of human TMEM30B
Conjugates	Unconjugated
Modification	Unmodification
Other Names	CDC50B
Accession No.	Swiss-Prot:Q3MIR4GeneID:161291
Uniprot	Q3MIR4
GeneID	161291
Calculated MW	Calculated MW: 39 kDa; Observed MW: 39 kDa
Concentration	0.3 mg/ml
Formulation	50mM Tris-Glycine(pH 7.4), 0.15M NaCl, 40% Glycerol, 0.01% Sodium azide and 0.05% BSA
Storage	Store at 4°C short term. Aliquot and store at -20°C long term. Avoid freeze/thaw cycles.

Application Details

WB: 1/1000-1/5000

Images



Western blot detection of TMEM30B in MCF7 cell lysates using TMEM30B Rabbit mAb(1:1000 diluted).Predicted band size:39KDa.Observed band size:39KDa.

Background

Swiss-Prot Acc.Q3MIR4. Accessory component of a P4-ATPase flippase complex which catalyzes the hydrolysis of ATP coupled to the transport of aminophospholipids from the outer to the inner leaflet of various membranes and ensures the maintenance of asymmetric distribution of phospholipids. Phospholipid translocation seems also to be implicated in vesicle formation and in uptake of lipid signaling molecules. The beta subunit may assist in binding of the phospholipid substrate (Probable). Can mediate the export of alpha subunits ATP8A1, ATP8B1, ATP8B2 and ATP8B4 from the ER to the plasma membrane.

Note: This product is for in vitro research use only