

## TPP1 Rabbit mAb

Catalog No: #52626

Package Size: #52626-1 50ul #52626-2 100ul

Orders: order@signalwayantibody.com

Support: tech@signalwayantibody.com

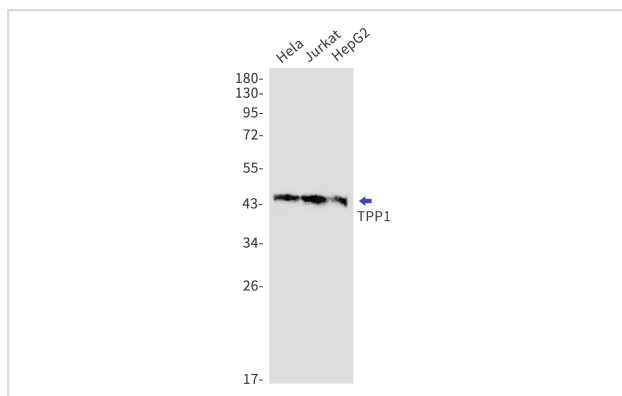
## Description

Product Name	TPP1 Rabbit mAb
Host Species	Recombinant Rabbit
Clonality	Monoclonal antibody
Clone No.	S09-2G9
Isotype	Rabbit IgG
Purification	Affinity Purified
Applications	WB
Species Reactivity	Human,Mouse,Rat
Immunogen Description	Recombinant protein of human TPP1
Conjugates	Unconjugated
Modification	Unmodification
Other Names	CLN2; GIG1; LPIC; SCAR7; TPP-1
Accession No.	Swiss-Prot:O14773GeneID:1200
Uniprot	O14773
GeneID	1200
Calculated MW	Calculated MW: 61,35 kDa; Observed MW: 61,48 kDa
Concentration	0.3 mg/ml
Formulation	50mM Tris-Glycine(pH 7.4), 0.15M NaCl, 40% Glycerol, 0.01% Sodium azide and 0.05% BSA
Storage	Store at 4°C short term. Aliquot and store at -20°C long term. Avoid freeze/thaw cycles.

## Application Details

WB: 1/1000-1/2000;

## Images



Western blot detection of TPP1 in HeLa, Jurkat, HepG2 cell lysates using TPP1 Rabbit mAb(1:1000 diluted). Predicted band size: 61,35kDa. Observed band size: 61,48kDa.

## Background

---

Swiss-Prot Acc.O14773.Lysosomal serine protease with tripeptidyl-peptidase I activity. May act as a non-specific lysosomal peptidase which generates tripeptides from the breakdown products produced by lysosomal proteinases. Requires substrates with an unsubstituted N-terminus .

---

Note: This product is for in vitro research use only