

WDR1 Rabbit mAb

Catalog No: #52652

Package Size: #52652-1 50ul #52652-2 100ul

Orders: order@signalwayantibody.com

Support: tech@signalwayantibody.com

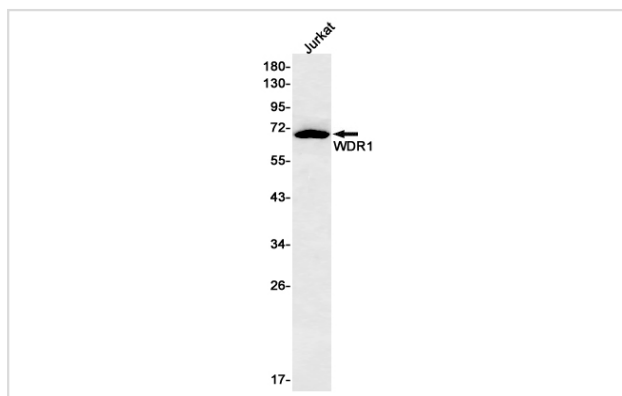
Description

| | |
|-----------------------|--|
| Product Name | WDR1 Rabbit mAb |
| Host Species | Recombinant Rabbit |
| Clonality | Monoclonal antibody |
| Clone No. | S01-6D6 |
| Isotype | Rabbit IgG |
| Purification | Affinity Purified |
| Applications | WB IHC IF |
| Species Reactivity | Human,Mouse,Rat |
| Immunogen Description | A synthetic peptide of human WDR1 |
| Conjugates | Unconjugated |
| Modification | Unmodification |
| Other Names | AIP1; NORI-1; HEL-S-52 |
| Accession No. | Swiss-Prot:O75083GeneID:9948 |
| Uniprot | O75083 |
| GeneID | 9948 |
| Calculated MW | Calculated MW: 66 kDa; Observed MW: 66 kDa |
| Concentration | 0.3 mg/ml |
| Formulation | 50mM Tris-Glycine(pH 7.4), 0.15M NaCl, 40% Glycerol, 0.01% Sodium azide and 0.05% BSA |
| Storage | Store at 4°C short term. Aliquot and store at -20°C long term. Avoid freeze/thaw cycles. |

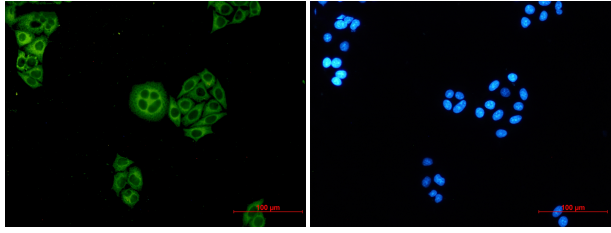
Application Details

WB: 1/1000-1/5000; IHC: 1/20-1/50; ICC/IF: 1/20-1/50

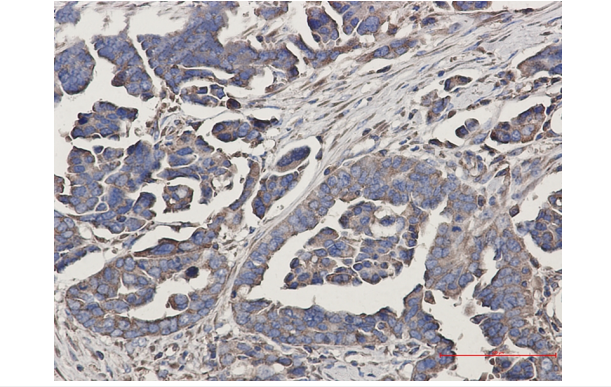
Images



Western blot detection of WDR1 in Jurkat cell lysates using WDR1 Rabbit mAb(1:500 diluted).Predicted band size:66kDa.Observed band size:66kDa.



Immunocytochemistry of WDR1 (green) in HeLa using WDR1 Rabbit mAb at dilution 1/5, and DAPI (blue)



Immunohistochemistry of WDR1 in paraffin-embedded Human Cholangiocarcinoma using WDR1 Rabbit mAb at dilution 1/50

Background

Swiss-Prot Acc.O75083. Induces disassembly of actin filaments in conjunction with ADF/cofilin family proteins (PubMed:15629458). Enhances cofilin-mediated actin severing. Involved in cytokinesis. Involved in chemotactic cell migration by restricting lamellipodial membrane protrusions (PubMed:18494608). Involved in myocardium sarcomere organization. Required for cardiomyocyte growth and maintenance. Involved in megakaryocyte maturation and platelet shedding. Required for the establishment of planar cell polarity (PCP) during follicular epithelium development and for cell shape changes during PCP; the function seems to implicate cooperation with CFL1 and/or DSTN/ADF. Involved in the generation/maintenance of cortical tension. Involved in assembly and maintenance of epithelial apical cell junctions and plays a role in the organization of the perijunctional actomyosin belt (PubMed:25792565).

Note: This product is for in vitro research use only