

ATF3 Rabbit mAb

Catalog No: #52664

Package Size: #52664-1 50ul #52664-2 100ul

Orders: order@signalwayantibody.com

Support: tech@signalwayantibody.com

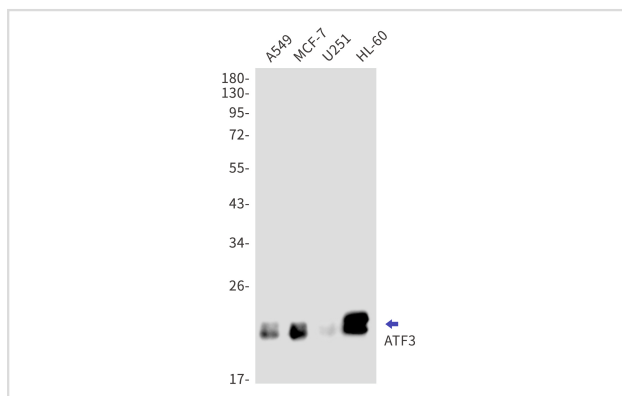
Description

Product Name	ATF3 Rabbit mAb
Host Species	Recombinant Rabbit
Clonality	Monoclonal antibody
Clone No.	S08-6H6
Isotype	IgG
Purification	Affinity Purified
Applications	WB
Species Reactivity	Human
Immunogen Description	Recombinant protein of human ATF3
Conjugates	Unconjugated
Modification	Unmodification
Other Names	Activating transcription factor 3
Accession No.	Swiss-Prot:P18847GenelD:467
Uniprot	P18847
GenelD	467
Calculated MW	Calculated MW:21 kDa,Observed MW:21 kDa
Concentration	0.3 mg/ml
Formulation	50mM Tris-Glycine(pH 7.4), 0.15M NaCl, 40% Glycerol, 0.01% Sodium azide and 0.05% BSA
Storage	Store at 4°C short term. Aliquot and store at -20°C long term. Avoid freeze/thaw cycles.

Application Details

WB: 1/1000

Images



Western blot detection of ATF3 in A549, MCF-7, U251, HL-60 cell lysates using ATF3 Rabbit mAb(1:1000 diluted). Predicted band size:21kDa. Observed band size:21kDa.

Background

This gene encodes a member of the mammalian activation transcription factor/cAMP responsive element-binding (CREB) protein family of transcription factors. This gene is induced by a variety of signals, including many of those encountered by cancer cells, and is involved in the complex process of cellular stress response. Multiple transcript variants encoding different isoforms have been found for this gene. It is possible that alternative splicing of this gene may be physiologically important in the regulation of target genes. [provided by RefSeq, Apr 2011]

Note: This product is for in vitro research use only