

IRF7 Rabbit mAb

Catalog No: #52665

Package Size: #52665-1 50ul #52665-2 100ul

Orders: order@signalwayantibody.comSupport: tech@signalwayantibody.com

Description

Product Name	IRF7 Rabbit mAb
Clone No.	S04-1E1
Isotype	IgG
Purification	Affinity-chromatography
Applications	WB;IHC;ICC/IF;IP;FC
Species Reactivity	Human,Mouse,Rat
Immunogen Description	A synthesized peptide derived from human IRF7
Conjugates	Unconjugated
Modification	Unmodification
Other Names	IMD39; IRF7A; IRF7B; IRF7C; IRF7H; IRF-7H
Accession No.	Swiss-Prot:Q92985GeneID:3665
Uniprot	Q92985
GeneID	3665
Calculated MW	Calculated MW:54 kDa,Observed MW:54 kDa
Concentration	1.5mg/ml
Formulation	Rabbit IgG in 10mM phosphate buffered saline , pH 7.4, 150mM sodium chloride, 0.05% BSA, 0.02% sodium azide and 50% glycerol.
Storage	Store at 4°C short term. Aliquot and store at -20°C long term. Avoid freeze/thaw cycles.

Application Details

WB 1:1000-1:2000

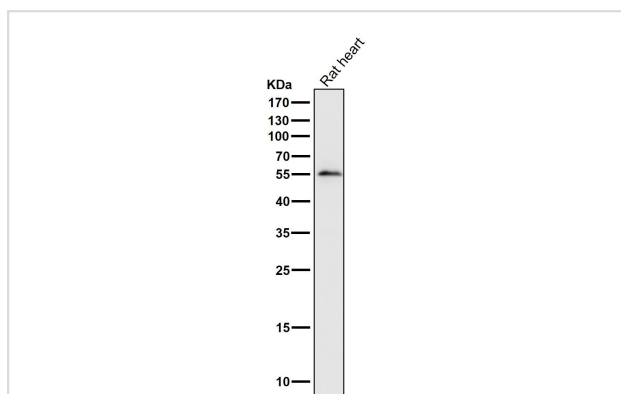
IHC 1:100-1:200

ICC/IF 1:50-1:200

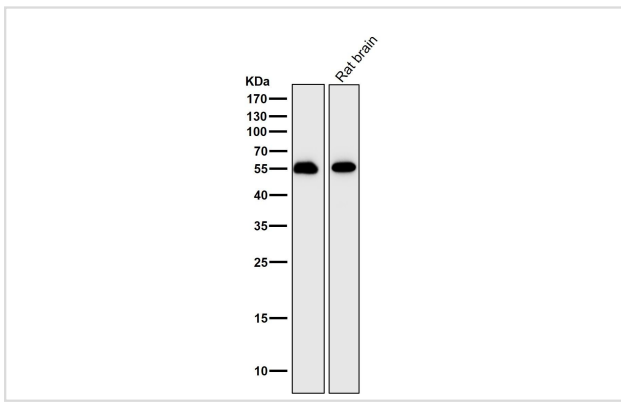
IP 1:20-1:50

FC 1:20-1:100

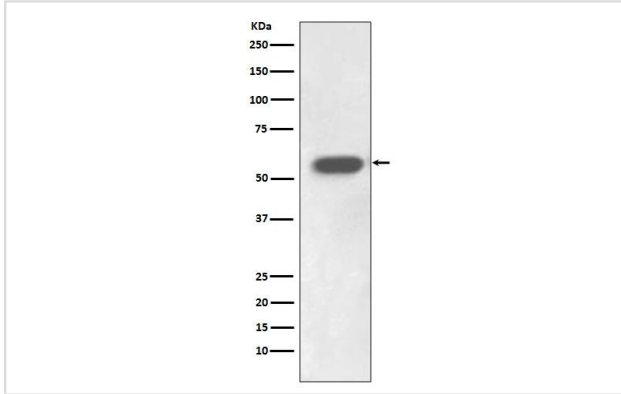
Images



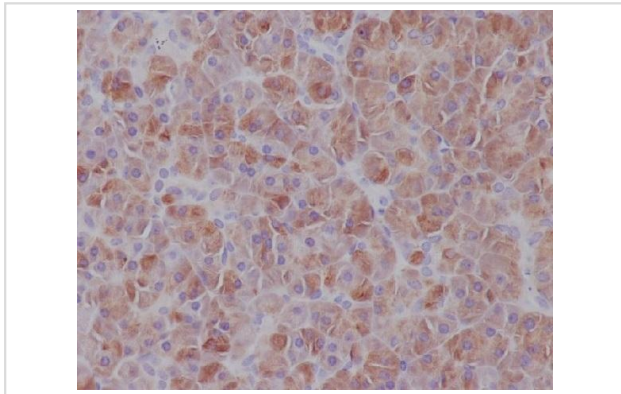
All lanes use the Antibody at 1:1K dilution for 1 hour at room temperature.



All lanes use the Antibody at 1:1K dilution for 1 hour at room temperature.



Western blot analysis of IRF7 expression in Jurkat cell lysate.



Immunohistochemical analysis of paraffin-embedded human pancreas, using IRF7 Antibody.

Background

Key transcriptional regulator of type I interferon (IFN)-dependent immune responses and plays a critical role in the innate immune response against DNA and RNA viruses. Regulates the transcription of type I IFN genes (IFN-alpha and IFN-beta) and IFN-stimulated genes (ISG) by binding to an interferon-stimulated response element (ISRE) in their promoters.

Note: This product is for in vitro research use only