

SF3A3 Rabbit mAb

Catalog No: #52669

Package Size: #52669-1 50ul #52669-2 100ul

Orders: order@signalwayantibody.com

Support: tech@signalwayantibody.com

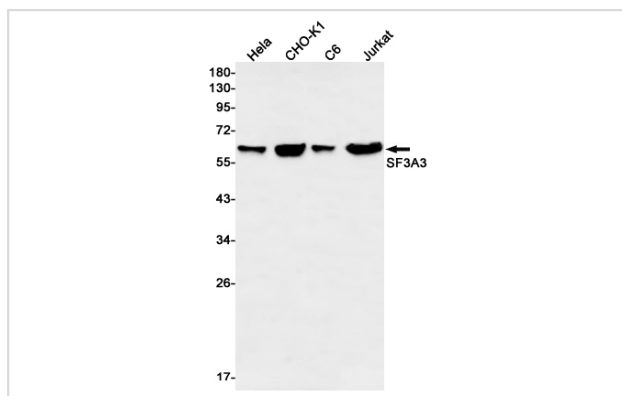
Description

Product Name	SF3A3 Rabbit mAb
Host Species	Recombinant Rabbit
Clonality	Monoclonal antibody
Clone No.	S06-317
Isotype	IgG
Purification	Affinity Purified
Applications	WB
Species Reactivity	Human,Mouse,Rat
Immunogen Description	A synthetic peptide of human SF3A3
Conjugates	Unconjugated
Modification	Unmodification
Other Names	PRP9; PRPF9; SAP61; SF3a60
Accession No.	Swiss-Prot:Q12874GeneID:10946
Uniprot	Q12874
GeneID	10946
Calculated MW	Calculated MW:59 kDa,Observed MW:59 kDa
Concentration	0.3 mg/ml
Formulation	50mM Tris-Glycine(pH 7.4), 0.15M NaCl, 40% Glycerol, 0.01% Sodium azide and 0.05% BSA
Storage	Store at 4°C short term. Aliquot and store at -20°C long term. Avoid freeze/thaw cycles.

Application Details

WB: 1/1000-1/5000

Images



Western blot detection of SF3A3 in HeLa,CHO-K1,C6,Jurkat cell lysates using SF3A3 Rabbit mAb(1:1000 diluted).Predicted band size:59kDa.Observed band size:59kDa.

Background

Involved in pre-mRNA splicing as a component of the splicing factor SF3A complex that contributes to the assembly of the 17S U2 snRNP, and the subsequent assembly of the pre-spliceosome 'E' complex and the pre-catalytic spliceosome 'A' complex (PubMed:8022796, PubMed:10882114, PubMed:11533230).Involved in pre-mRNA splicing as a component of pre-catalytic spliceosome 'B' complexes (PubMed:29360106, PubMed:30315277).

Note: This product is for in vitro research use only