

MST1 Rabbit mAb

Catalog No: #52672

Package Size: #52672-1 50ul #52672-2 100ul

Orders: order@signalwayantibody.com

Support: tech@signalwayantibody.com

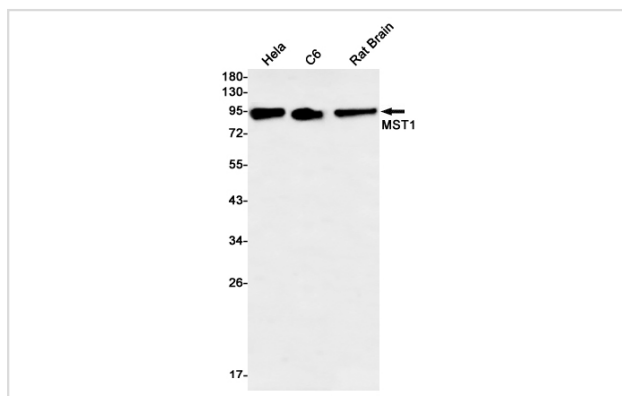
Description

Product Name	MST1 Rabbit mAb
Host Species	Recombinant Rabbit
Clonality	Monoclonal antibody
Clone No.	S04-1D6
Isotype	IgG
Purification	Affinity Purified
Applications	WB IHC
Species Reactivity	Human,Mouse,Rat
Immunogen Description	A synthetic peptide of human MST1
Conjugates	Unconjugated
Modification	Unmodification
Other Names	MSP; HGFL; NF15S2; D3F15S2; DNF15S2
Accession No.	Swiss-Prot:P26927GenelD:4485
Uniprot	P26927
GenelD	4485
Calculated MW	Calculated MW:80 kDa,Observed MW:96 kDa
Concentration	0.3 mg/ml
Formulation	50mM Tris-Glycine(pH 7.4), 0.15M NaCl, 40% Glycerol, 0.01% Sodium azide and 0.05% BSA
Storage	Store at 4°C short term. Aliquot and store at -20°C long term. Avoid freeze/thaw cycles.

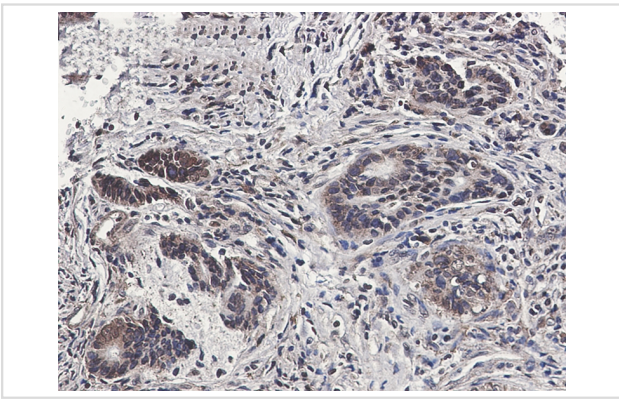
Application Details

WB: 1/1000-1/5000 IHC: 1/20-1/50

Images



Western blot detection of MST1 in HeLa,C6,Rat Brain lysates using MST1 Rabbit mAb(1:1000 diluted).Predicted band size:80kDa.Observed band size:80kDa.



Immunohistochemistry of MST1 in paraffin-embedded Human colon cancer tissue using MST1 Rabbit mAb at dilution 1/50

Background

Although related to peptidase S1 family, the active site residues characteristic of serine proteases appear to be absent from this protein, which may therefore lack protease activity.

Note: This product is for in vitro research use only