

ETS1 Rabbit mAb

Catalog No: #52673

Package Size: #52673-1 50ul #52673-2 100ul

Orders: order@signalwayantibody.com

Support: tech@signalwayantibody.com

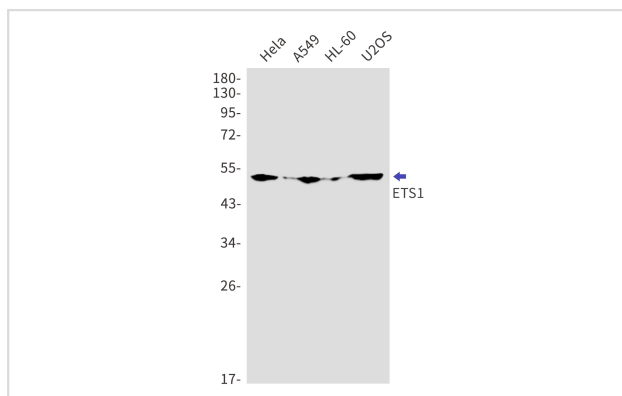
Description

Product Name	ETS1 Rabbit mAb
Host Species	Recombinant Rabbit
Clonality	Monoclonal antibody
Clone No.	S04-8C7
Isotype	IgG
Purification	Affinity Purified
Applications	WB
Species Reactivity	Human,Mouse
Immunogen Description	A synthetic peptide of human ETS1
Conjugates	Unconjugated
Modification	Unmodification
Other Names	p54; ETS-1; EWSR2; c-ets-1
Accession No.	Swiss-Prot:P14921GenelD:2113
Uniprot	P14921
GenelD	2113
Calculated MW	Calculated MW:50 kDa,Observed MW:50 kDa
Concentration	0.3 mg/ml
Formulation	50mM Tris-Glycine(pH 7.4), 0.15M NaCl, 40% Glycerol, 0.01% Sodium azide and 0.05% BSA
Storage	Store at 4°C short term. Aliquot and store at -20°C long term. Avoid freeze/thaw cycles.

Application Details

WB: 1/1000-1/5000

Images



Western blot detection of ETS1 in HeLa,A549,HL-60,U2OS cell lysates using ETS1 Rabbit mAb(1:1000 diluted).Predicted band size:50kDa.Observed band size:50kDa.

Background

This gene encodes a member of the ETS family of transcription factors, which are defined by the presence of a conserved ETS DNA-binding domain that recognizes the core consensus DNA sequence GGAA/T in target genes. These proteins function either as transcriptional activators or repressors of numerous genes, and are involved in stem cell development, cell senescence and death, and tumorigenesis. Alternatively spliced transcript variants encoding different isoforms have been described for this gene.[provided by RefSeq, Jul 2011]

Note: This product is for in vitro research use only