

PIM1 Rabbit mAb

Catalog No: #52674



Package Size: #52674-1 50ul #52674-2 100ul

Orders: order@signalwayantibody.com
Support: tech@signalwayantibody.com

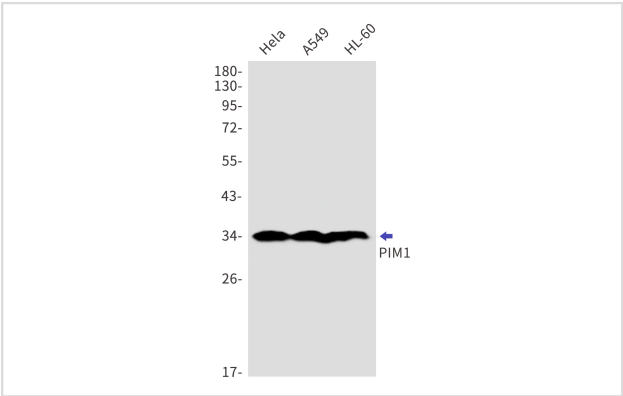
Description

Product Name	PIM1 Rabbit mAb
Host Species	Recombinant Rabbit
Clonality	Monoclonal antibody
Clone No.	S08-8D5
Isotype	IgG
Purification	Affinity Purified
Applications	WB IHC
Species Reactivity	Human,Mouse
Immunogen Description	A synthetic peptide of human PIM1
Conjugates	Unconjugated
Modification	Unmodification
Other Names	PIM
Accession No.	Swiss-Prot:P11309GenelD:5292
Uniprot	P11309
GenelD	5292
Calculated MW	Calculated MW:45 kDa,Observed MW:34 kDa
Concentration	0.3 mg/ml
Formulation	50mM Tris-Glycine(pH 7.4), 0.15M NaCl, 40% Glycerol, 0.01% Sodium azide and 0.05% BSA
Storage	Store at 4°C short term. Aliquot and store at -20°C long term. Avoid freeze/thaw cycles.

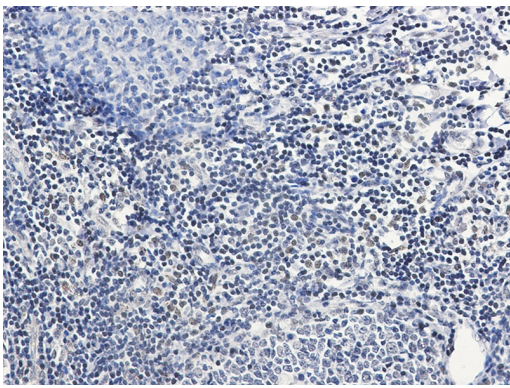
Application Details

WB: 1/2000-1/10000 IHC: 1/20-1/50

Images



Western blot detection of PIM1 in HeLa,A549,HL-60 cell lysates using PIM1 Rabbit mAb(1:1000 diluted).Predicted band size:45kDa.Observed band size:34kDa.



Immunohistochemistry of PIM1 in paraffin-embedded Human tonsil using PIM1 Rabbit mAb at dilution 1/50

Background

The protein encoded by this gene belongs to the Ser/Thr protein kinase family, and PIM subfamily. This gene is expressed primarily in B-lymphoid and myeloid cell lines, and is overexpressed in hematopoietic malignancies and in prostate cancer. It plays a role in signal transduction in blood cells, contributing to both cell proliferation and survival, and thus provides a selective advantage in tumorigenesis. Both the human and orthologous mouse genes have been reported to encode two isoforms (with preferential cellular localization) resulting from the use of alternative in-frame translation initiation codons, the upstream non-AUG (CUG) and downstream AUG codons (PMIDs:16186805, 1825810).[provided by RefSeq, Aug 2011]

Note: This product is for in vitro research use only