

IFRD1 Rabbit mAb

Catalog No: #52676



Package Size: #52676-1 50ul #52676-2 100ul

Orders: order@signalwayantibody.com
Support: tech@signalwayantibody.com

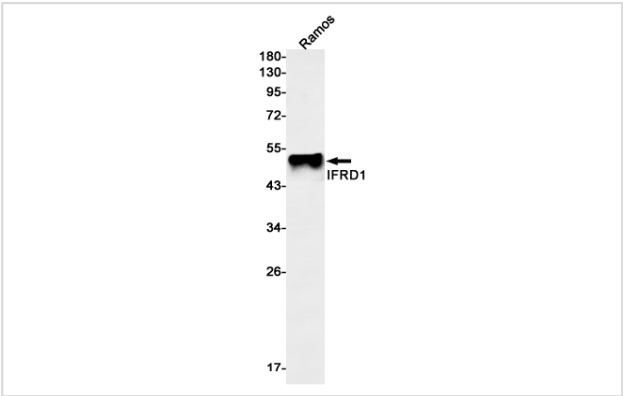
Description

Product Name	IFRD1 Rabbit mAb
Host Species	Recombinant Rabbit
Clonality	Monoclonal antibody
Clone No.	S05-2H2
Isotype	IgG
Purification	Affinity Purified
Applications	WB
Species Reactivity	Human,Mouse,Rat
Immunogen Description	A synthetic peptide of human IFRD1
Conjugates	Unconjugated
Modification	Unmodification
Other Names	PC4; TIS7
Accession No.	Swiss-Prot:O00458GeneID:3475
Uniprot	O00458
GeneID	3475
Calculated MW	Calculated MW:50 kDa,Observed MW:50 kDa
Concentration	0.3 mg/ml
Formulation	50mM Tris-Glycine(pH 7.4), 0.15M NaCl, 40% Glycerol, 0.01% Sodium azide and 0.05% BSA
Storage	Store at 4°C short term. Aliquot and store at -20°C long term. Avoid freeze/thaw cycles.

Application Details

WB: 1/2000-1/10000

Images



Western blot detection of IFRD1 in Ramos cell lysates using IFRD1 Rabbit mAb(1:1000 diluted).Predicted band size:50kDa.Observed band size:50kDa.

Background

Could play a role in regulating gene activity in the proliferative and/or differentiative pathways induced by NGF. May be an autocrine factor that attenuates or amplifies the initial ligand-induced signal (By similarity).

Note: This product is for in vitro research use only