

RBM43 Rabbit mAb

Catalog No: #52678

Package Size: #52678-1 50ul #52678-2 100ul

Orders: order@signalwayantibody.com

Support: tech@signalwayantibody.com

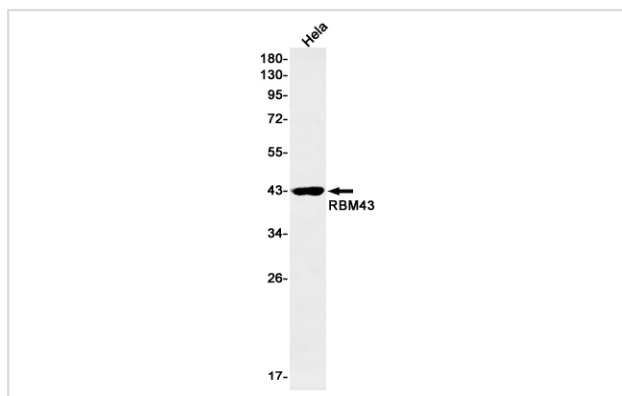
Description

Product Name	RBM43 Rabbit mAb
Host Species	Recombinant Rabbit
Clonality	Monoclonal antibody
Clone No.	S03-615
Isotype	IgG
Purification	Affinity Purified
Applications	WB
Species Reactivity	Human
Immunogen Description	Recombinant protein of human RBM43
Conjugates	Unconjugated
Modification	Unmodification
Other Names	C2orf38
Accession No.	Swiss-Prot:Q6ZSC3GeneID:375287
Uniprot	Q6ZSC3
GeneID	375287
Calculated MW	Calculated MW:41 kDa,Observed MW:41 kDa
Concentration	0.3 mg/ml
Formulation	50mM Tris-Glycine(pH 7.4), 0.15M NaCl, 40% Glycerol, 0.01% Sodium azide and 0.05% BSA
Storage	Store at 4°C short term. Aliquot and store at -20°C long term. Avoid freeze/thaw cycles.

Application Details

WB: 1/1000-1/5000

Images



Western blot detection of RBM43 in HeLa cell lysates using RBM43 Rabbit mAb(1:1000 diluted).Predicted band size:41kDa.Observed band size:41kDa.

Background

Predicted to enable RNA binding activity. [provided by Alliance of Genome Resources, Apr 2022]

Note: This product is for in vitro research use only