

SF20 Rabbit mAb

Catalog No: #52680

Package Size: #52680-1 50ul #52680-2 100ul

Orders: order@signalwayantibody.com

Support: tech@signalwayantibody.com

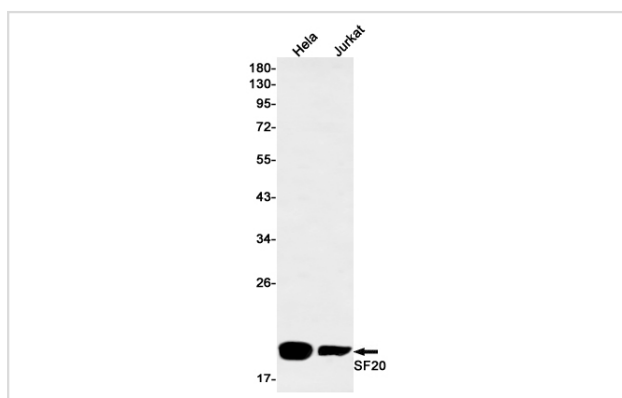
Description

Product Name	SF20 Rabbit mAb
Host Species	Recombinant Rabbit
Clonality	Monoclonal antibody
Clone No.	S06-7B1
Isotype	IgG
Purification	Affinity Purified
Applications	WB
Species Reactivity	Human
Immunogen Description	Recombinant protein of human SF20
Conjugates	Unconjugated
Modification	Unmodification
Other Names	IL25; IL27; SF20; IL27w; C19orf10; R33729_1; EUROIMAGE1875335
Accession No.	Swiss-Prot:Q969H8GeneID:56005
Uniprot	Q969H8
GeneID	56005
Calculated MW	Calculated MW:19 kDa,Observed MW:19 kDa
Concentration	0.3 mg/ml
Formulation	50mM Tris-Glycine(pH 7.4), 0.15M NaCl, 40% Glycerol, 0.01% Sodium azide and 0.05% BSA
Storage	Store at 4°C short term. Aliquot and store at -20°C long term. Avoid freeze/thaw cycles.

Application Details

WB: 1/1000

Images



Western blot detection of SF20 in HeLa, Jurkat cell lysates using SF20 Rabbit mAb(1:1000 diluted). Predicted band size:19kDa. Observed band size:19kDa.

Background

Bone marrow-derived monocyte and paracrine-acting protein that promotes cardiac myocyte survival and adaptive angiogenesis for cardiac protection and/or repair after myocardial infarction (MI). Stimulates endothelial cell proliferation through a MAPK1/3-, STAT3- and CCND1-mediated signaling pathway. Inhibits cardiac myocyte apoptosis in a PI3K/AKT-dependent signaling pathway (By similarity).Involved in endothelial cell proliferation and angiogenesis (PubMed:25581518).By similarity1 Publication

Note: This product is for in vitro research use only