

## Notch4 Rabbit mAb

Catalog No: #52686

Package Size: #52686-1 50ul #52686-2 100ul

Orders: order@signalwayantibody.com

Support: tech@signalwayantibody.com

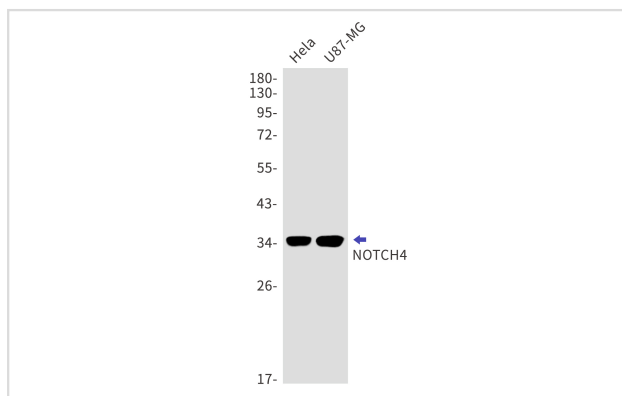
## Description

Product Name	Notch4 Rabbit mAb
Host Species	Recombinant Rabbit
Clonality	Monoclonal antibody
Clone No.	S08-8H5
Isotype	IgG
Purification	Affinity Purified
Applications	WB
Species Reactivity	Human
Immunogen Description	A synthetic peptide of human NOTCH4
Conjugates	Unconjugated
Modification	Unmodification
Other Names	INT3
Accession No.	Swiss-Prot:Q99466GeneID:4855
Uniprot	Q99466
GeneID	4855
Calculated MW	Calculated MW:36 kDa,Observed MW:36 kDa
Concentration	0.3 mg/ml
Formulation	50mM Tris-Glycine(pH 7.4), 0.15M NaCl, 40% Glycerol, 0.01% Sodium azide and 0.05% BSA
Storage	Store at 4°C short term. Aliquot and store at -20°C long term. Avoid freeze/thaw cycles.

## Application Details

WB: 1/2000-1/10000

## Images



Western blot detection of NOTCH4 in HeLa,U87-MG cell lysates using NOTCH4 Rabbit mAb(1:1000 diluted).Predicted band size:36kDa.Observed band size:36kDa.

## Background

---

Functions as a receptor for membrane-bound ligands Jagged1, Jagged2 and Delta1 to regulate cell-fate determination. Upon ligand activation through the released notch intracellular domain (NICD) it forms a transcriptional activator complex with RBPJ/RBPSUH and activates genes of the enhancer of split locus. Affects the implementation of differentiation, proliferation and apoptotic programs. May regulate branching morphogenesis in the developing vascular system (By similarity).

---

Note: This product is for in vitro research use only