

Phospho-Cyclin B1 (Ser126) Rabbit mAb

Catalog No: #52692

Package Size: #52692-1 50ul #52692-2 100ul

Orders: order@signalwayantibody.com

Support: tech@signalwayantibody.com

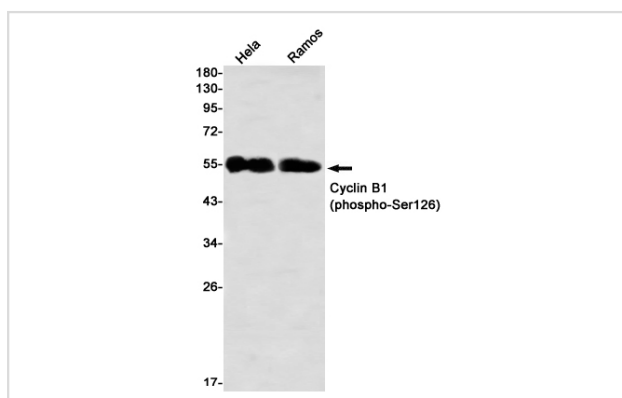
Description

Product Name	Phospho-Cyclin B1 (Ser126) Rabbit mAb
Host Species	Recombinant Rabbit
Clonality	Monoclonal antibody
Clone No.	S05-3B3
Isotype	IgG
Purification	Affinity Purified
Applications	WB
Species Reactivity	Human
Immunogen Description	A synthetic phosphopeptide corresponding to residues surrounding Ser126 of human Cyclin B1
Conjugates	Unconjugated
Modification	Phosphorylated
Other Names	CCNB
Accession No.	Swiss-Prot:P14635GenelD:891
Uniprot	P14635
GenelD	891
Calculated MW	Calculated MW:48 kDa,Observed MW:55 kDa
Concentration	0.3 mg/ml
Formulation	50mM Tris-Glycine(pH 7.4), 0.15M NaCl, 40% Glycerol, 0.01% Sodium azide and 0.05% BSA
Storage	Store at 4°C short term. Aliquot and store at -20°C long term. Avoid freeze/thaw cycles.

Application Details

WB: 1/1000

Images



Western blot detection of Cyclin B1 (phospho-Ser126) in HeLa,Ramos using Cyclin B1 (phospho-Ser126) Rabbit mAb(1:1000 diluted)

Background

Essential for the control of the cell cycle at the G2/M (mitosis) transition.

Note: This product is for in vitro research use only