

## Phospho-E Cadherin (Ser838/Ser840) Rabbit mAb

Catalog No: #52693

Package Size: #52693-1 50ul #52693-2 100ul

Orders: order@signalwayantibody.com

Support: tech@signalwayantibody.com

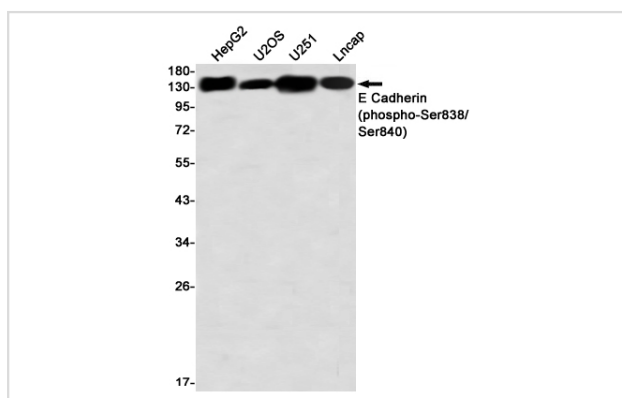
## Description

Product Name	Phospho-E Cadherin (Ser838/Ser840) Rabbit mAb
Host Species	Recombinant Rabbit
Clonality	Monoclonal antibody
Clone No.	S03-3B3
Isotype	IgG
Purification	Affinity Purified
Applications	WB IHC
Species Reactivity	Human,Mouse,Rat
Immunogen Description	A synthetic phosphopeptide corresponding to residues surrounding Ser838/Ser840 of human E Cadherin
Conjugates	Unconjugated
Modification	Phosphorylated
Other Names	UVO; CDHE; ECAD; LCAM; Arc-1; BCDS1; CD324
Accession No.	Swiss-Prot:P12830GenelD:999
Uniprot	P12830
GenelD	999
Calculated MW	Calculated MW:98 kDa,Observed MW:135 kDa
Concentration	0.3 mg/ml
Formulation	50mM Tris-Glycine(pH 7.4), 0.15M NaCl, 40% Glycerol, 0.01% Sodium azide and 0.05% BSA
Storage	Store at 4°C short term. Aliquot and store at -20°C long term. Avoid freeze/thaw cycles.

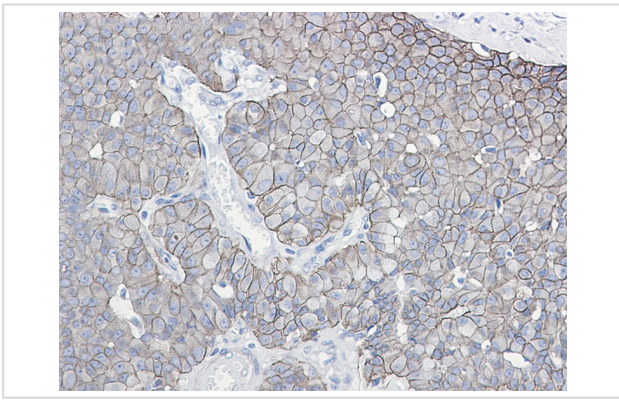
## Application Details

WB: 1/2000-1/10000 IHC: 1/20

## Images



Western blot detection of E Cadherin (phospho-Ser838/Ser840) in HepG2, U2OS, U251, Lncap using E Cadherin (phospho-Ser838/Ser840) Rabbit mAb(1:1000 diluted)



Immunohistochemistry of E Cadherin (phospho-Ser838/Ser840) in paraffin-embedded Human breast cancer tissue using E Cadherin (phospho-Ser838/Ser840) Rabbit mAb at dilution 1/50

## Background

Cadherins are calcium-dependent cell adhesion proteins (PubMed:11976333). They preferentially interact with themselves in a homophilic manner in connecting cells; cadherins may thus contribute to the sorting of heterogeneous cell types. CDH1 is involved in mechanisms regulating cell-cell adhesions, mobility and proliferation of epithelial cells (PubMed:11976333). Has a potent invasive suppressor role. It is a ligand for integrin alpha-E/beta-7.

Note: This product is for in vitro research use only