

Phospho-IRE1 (Ser724) Rabbit mAb

Catalog No: #52697

Package Size: #52697-1 50ul #52697-2 100ul

Orders: order@signalwayantibody.com

Support: tech@signalwayantibody.com

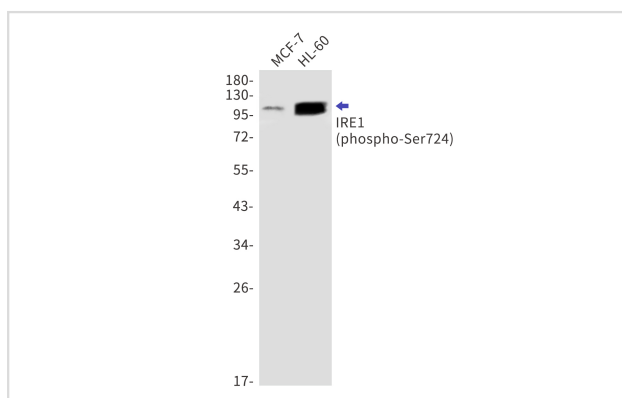
Description

Product Name	Phospho-IRE1 (Ser724) Rabbit mAb
Host Species	Recombinant Rabbit
Clonality	Monoclonal antibody
Clone No.	S05-6E7
Isotype	IgG
Purification	Affinity Purified
Applications	WB
Species Reactivity	Human
Immunogen Description	A synthetic phosphopeptide corresponding to residues surrounding Ser724 of human IRE1
Conjugates	Unconjugated
Modification	Phosphorylated
Other Names	IRE1b; IRE2p; hIRE2p; IRE1-BETA
Accession No.	Swiss-Prot:O75460GeneID:10595
Uniprot	O75460
GeneID	10595
Calculated MW	Calculated MW:110 kDa,Observed MW:110 kDa
Concentration	0.3 mg/ml
Formulation	50mM Tris-Glycine(pH 7.4), 0.15M NaCl, 40% Glycerol, 0.01% Sodium azide and 0.05% BSA
Storage	Store at 4°C short term. Aliquot and store at -20°C long term. Avoid freeze/thaw cycles.

Application Details

WB: 1/1000

Images



Western blot detection of phospho-IRE1 (Ser724) in MCF-7,HL-60 cell lysates using phospho-IRE1 (Ser724) Rabbit mAb(1:1000 diluted).Predicted band size:110kDa.Observed band size:110kDa.

Background

Serine/threonine-protein kinase and endoribonuclease that acts as a key sensor for the endoplasmic reticulum unfolded protein response (UPR)
(PubMed:11779464, PubMed:11175748, PubMed:12637535, PubMed:9637683, PubMed:21317875)

Note: This product is for in vitro research use only