

BAP1 Rabbit mAb

Catalog No: #52718

Package Size: #52718-1 50ul #52718-2 100ul

Orders: order@signalwayantibody.com

Support: tech@signalwayantibody.com

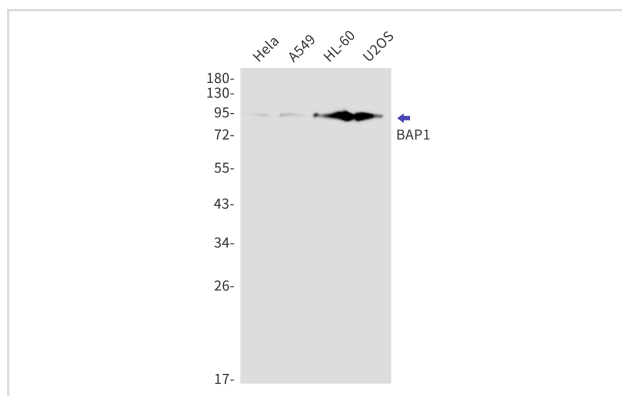
Description

Product Name	BAP1 Rabbit mAb
Host Species	Recombinant Rabbit
Clonality	Monoclonal antibody
Clone No.	S04-1F0
Isotype	IgG
Purification	Affinity Purified
Applications	WB
Species Reactivity	Human
Immunogen Description	Recombinant protein of human BAP1
Conjugates	Unconjugated
Modification	Unmodification
Other Names	UCHL2; hucep-6; HUCEP-13
Accession No.	Swiss-Prot:Q92560GeneID:8314
Uniprot	Q92560
GeneID	8314
Calculated MW	Calculated MW:80 kDa,Observed MW:95 kDa
Concentration	0.3 mg/ml
Formulation	50mM Tris-Glycine(pH 7.4), 0.15M NaCl, 40% Glycerol, 0.01% Sodium azide and 0.05% BSA
Storage	Store at 4°C short term. Aliquot and store at -20°C long term. Avoid freeze/thaw cycles.

Application Details

WB: 1/1000

Images



Western blot detection of BAP1 in HeLa, A549, HL-60, U2OS cell lysates using BAP1 Rabbit mAb (1:1000 diluted). Predicted band size: 80kDa. Observed band size: 95kDa.

Background

This gene belongs to the ubiquitin C-terminal hydrolase subfamily of deubiquitinating enzymes that are involved in the removal of ubiquitin from proteins. The encoded enzyme binds to the breast cancer type 1 susceptibility protein (BRCA1) via the RING finger domain of the latter and acts as a tumor suppressor. In addition, the enzyme may be involved in regulation of transcription, regulation of cell cycle and growth, response to DNA damage and chromatin dynamics. Germline mutations in this gene may be associated with tumor predisposition syndrome (TPDS), which involves increased risk of cancers including malignant mesothelioma, uveal melanoma and cutaneous melanoma. [provided by RefSeq, May 2013]

Note: This product is for in vitro research use only