

CAB39 Rabbit mAb

Catalog No: #52728

Package Size: #52728-1 50ul #52728-2 100ul

Orders: order@signalwayantibody.com

Support: tech@signalwayantibody.com

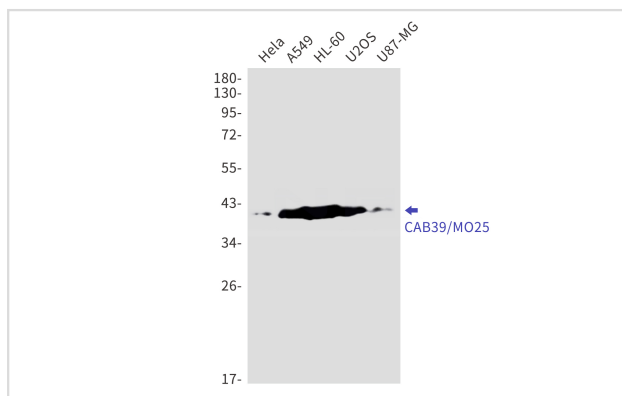
Description

Product Name	CAB39 Rabbit mAb
Host Species	Recombinant Rabbit
Clonality	Monoclonal antibody
Clone No.	S03-4G7
Isotype	IgG
Purification	Affinity Purified
Applications	WB IHC
Species Reactivity	Human,Mouse,Rat
Immunogen Description	A synthetic peptide of human CAB39/MO25
Conjugates	Unconjugated
Modification	Unmodification
Other Names	MO25; CGI-66
Accession No.	Swiss-Prot:Q9Y376GeneID:51719
Uniprot	Q9Y376
GeneID	51719
Calculated MW	Calculated MW:40 kDa,Observed MW:39 kDa
Concentration	0.3 mg/ml
Formulation	50mM Tris-Glycine(pH 7.4), 0.15M NaCl, 40% Glycerol, 0.01% Sodium azide and 0.05% BSA
Storage	Store at 4°C short term. Aliquot and store at -20°C long term. Avoid freeze/thaw cycles.

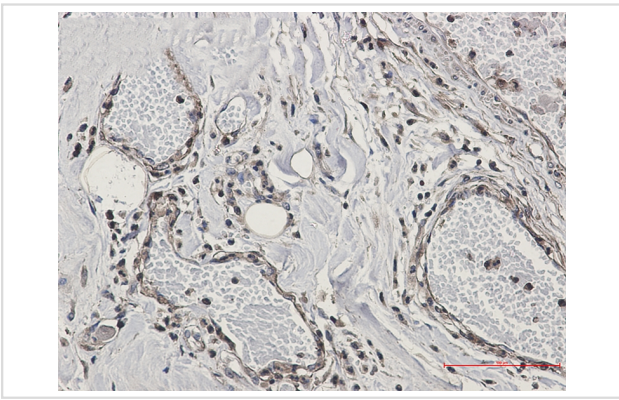
Application Details

WB: 1/1000 IHC: 1/20

Images



Western blot detection of CAB39/MO25 in HeLa,A549,HL-60,U2OS,U87-MG cell lysates using CAB39/MO25 Rabbit mAb(1:1000 diluted).Predicted band size:40kDa.Observed band size:39kDa.



Immunohistochemistry of CAB39/MO25 in paraffin-embedded Human Cholangiocarcinoma using CAB39/MO25 Rabbit mAb at dilution 1/50

Background

Component of a complex that binds and activates STK11/LKB1. In the complex, required to stabilize the interaction between CAB39/MO25 (CAB39/MO25alpha or CAB39L/MO25beta) and STK11/LKB1.

Note: This product is for in vitro research use only