

CARS Rabbit mAb

Catalog No: #52732

Package Size: #52732-1 50ul #52732-2 100ul

Orders: order@signalwayantibody.com

Support: tech@signalwayantibody.com

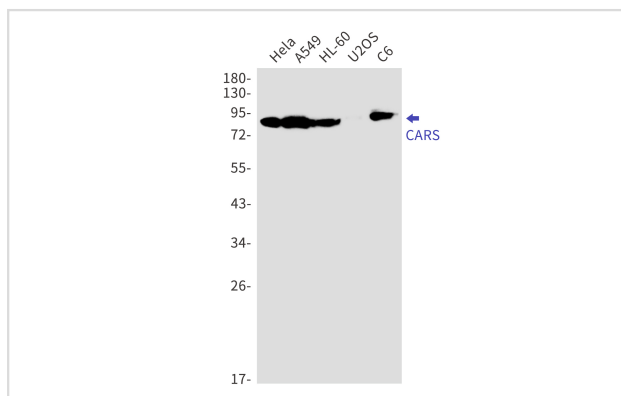
Description

Product Name	CARS Rabbit mAb
Host Species	Recombinant Rabbit
Clonality	Monoclonal antibody
Clone No.	S01-7D4
Isotype	IgG
Purification	Affinity Purified
Applications	WB IHC
Species Reactivity	Human
Immunogen Description	A synthetic peptide of human CARS
Conjugates	Unconjugated
Modification	Unmodification
Other Names	CARS; MDBH; CYSRS; MCDDBH; MGC:11246
Accession No.	Swiss-Prot:P49589GenelD:833
Uniprot	P49589
GenelD	833
Calculated MW	Calculated MW:86 kDa,Observed MW:86 kDa
Concentration	0.3 mg/ml
Formulation	50mM Tris-Glycine(pH 7.4), 0.15M NaCl, 40% Glycerol, 0.01% Sodium azide and 0.05% BSA
Storage	Store at 4°C short term. Aliquot and store at -20°C long term. Avoid freeze/thaw cycles.

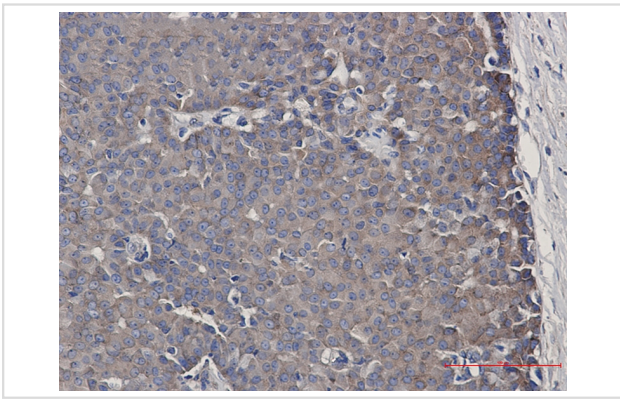
Application Details

WB: 1/2000-1/10000 IHC: 1/20

Images



Western blot detection of CARS in HeLa,A549,HL-60,U2OS,C6 cell lysates using CARS Rabbit mAb(1:1000 diluted).Predicted band size:86kDa.Observed band size:86kDa.



Immunohistochemistry of CARS in paraffin-embedded Human breast cancer tissue using CARS Rabbit mAb at dilution 1/50

Background

Catalyzes the ATP-dependent ligation of cysteine to tRNA(Cys).

Note: This product is for in vitro research use only