

## CD105 Rabbit mAb

Catalog No: #52734

Package Size: #52734-1 50ul #52734-2 100ul

Orders: order@signalwayantibody.com

Support: tech@signalwayantibody.com

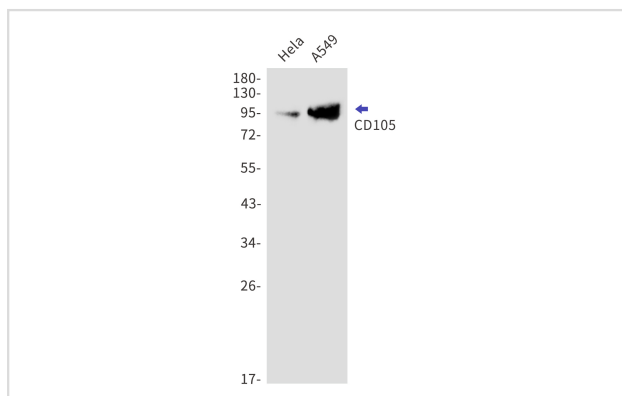
## Description

Product Name	CD105 Rabbit mAb
Host Species	Recombinant Rabbit
Clonality	Monoclonal antibody
Clone No.	S05-3H7
Isotype	IgG
Purification	Affinity Purified
Applications	WB IHC
Species Reactivity	Human
Immunogen Description	Recombinant protein of human CD105
Conjugates	Unconjugated
Modification	Unmodification
Other Names	CD105; END; Endoglin; Eng; HHT1; ORW; ORW1; SN6;
Accession No.	Swiss-Prot:P17813GenelD:2022
Uniprot	P17813
GenelD	2022
Calculated MW	Calculated MW:71 kDa,Observed MW:95 kDa
Concentration	0.3 mg/ml
Formulation	50mM Tris-Glycine(pH 7.4), 0.15M NaCl, 40% Glycerol, 0.01% Sodium azide and 0.05% BSA
Storage	Store at 4°C short term. Aliquot and store at -20°C long term. Avoid freeze/thaw cycles.

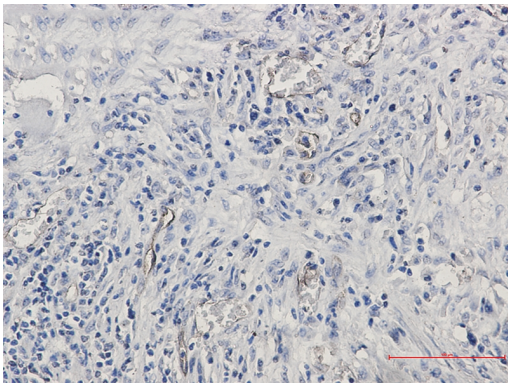
## Application Details

WB: 1/1000 IHC: 1/20

## Images



Western blot detection of CD105 in HeLa,A549 cell lysates using CD105 Rabbit mAb(1:1000 diluted).Predicted band size:71kDa.Observed band size:95kDa.



Immunohistochemistry of CD105 in paraffin-embedded Human lung cancer tissue using CD105 Rabbit mAb at dilution 1/50

## Background

This gene encodes a homodimeric transmembrane protein which is a major glycoprotein of the vascular endothelium. This protein is a component of the transforming growth factor beta receptor complex and it binds to the beta1 and beta3 peptides with high affinity. Mutations in this gene cause hereditary hemorrhagic telangiectasia, also known as Osler-Rendu-Weber syndrome 1, an autosomal dominant multisystemic vascular dysplasia. This gene may also be involved in preeclampsia and several types of cancer. Alternatively spliced transcript variants encoding different isoforms have been found for this gene. [provided by RefSeq, May 2013]

Note: This product is for in vitro research use only