

## CEP55 Rabbit mAb

Catalog No: #52738

Package Size: #52738-1 50ul #52738-2 100ul

Orders: order@signalwayantibody.com

Support: tech@signalwayantibody.com

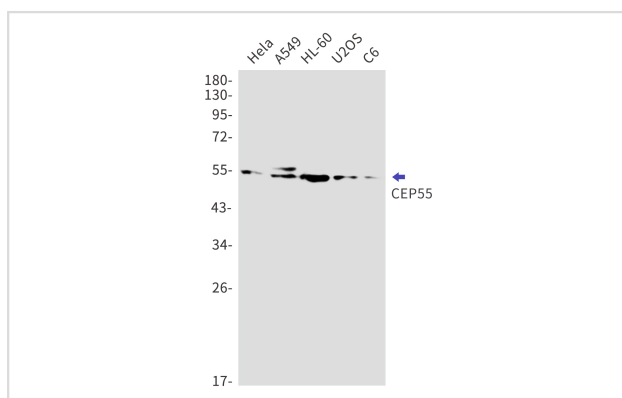
## Description

Product Name	CEP55 Rabbit mAb
Host Species	Recombinant Rabbit
Clonality	Monoclonal antibody
Clone No.	S05-6A6
Isotype	IgG
Purification	Affinity Purified
Applications	WB
Species Reactivity	Human,Mouse,Rat
Immunogen Description	A synthetic peptide of human CEP55
Conjugates	Unconjugated
Modification	Unmodification
Other Names	CT111; MARCH; URCC6; C10orf3
Accession No.	Swiss-Prot:Q53EZ4GeneID:55165
Uniprot	Q53EZ4
GeneID	55165
Calculated MW	Calculated MW:54 kDa,Observed MW:55 kDa
Concentration	0.3 mg/ml
Formulation	50mM Tris-Glycine(pH 7.4), 0.15M NaCl, 40% Glycerol, 0.01% Sodium azide and 0.05% BSA
Storage	Store at 4°C short term. Aliquot and store at -20°C long term. Avoid freeze/thaw cycles.

## Application Details

WB: 1/1000

## Images



Western blot detection of CEP55 in HeLa,A549,HL-60,U2OS,C6 cell lysates using CEP55 Rabbit mAb(1:1000 diluted).Predicted band size:54kDa.Observed band size:55kDa.

## Background

---

Plays a role in mitotic exit and cytokinesis (PubMed:16198290, PubMed:17853893)

---

Note: This product is for in vitro research use only