

## CLPX Rabbit mAb

Catalog No: #52740

Package Size: #52740-1 50ul #52740-2 100ul

Orders: order@signalwayantibody.com

Support: tech@signalwayantibody.com

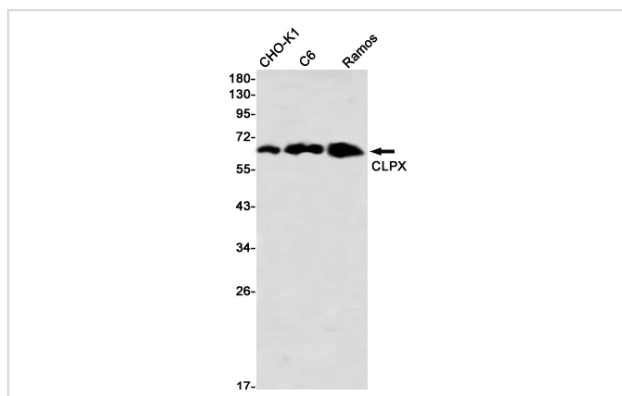
## Description

Product Name	CLPX Rabbit mAb
Host Species	Recombinant Rabbit
Clonality	Monoclonal antibody
Clone No.	S05-2A6
Isotype	IgG
Purification	Affinity Purified
Applications	WB
Species Reactivity	Human,Mouse,Rat
Immunogen Description	A synthetic peptide of human CLPX
Conjugates	Unconjugated
Modification	Unmodification
Other Names	EPP2
Accession No.	Swiss-Prot:O76031GeneID:10845
Uniprot	O76031
GeneID	10845
Calculated MW	Calculated MW:69 kDa,Observed MW:69 kDa
Concentration	0.3 mg/ml
Formulation	50mM Tris-Glycine(pH 7.4), 0.15M NaCl, 40% Glycerol, 0.01% Sodium azide and 0.05% BSA
Storage	Store at 4°C short term. Aliquot and store at -20°C long term. Avoid freeze/thaw cycles.

## Application Details

WB: 1/1000

## Images



Western blot detection of CLPX in CHO-K1,C6,Ramos using CLPX Rabbit mAb(1:1000 diluted)

## Background

---

ATP-dependent specificity component of the Clp protease complex. Hydrolyzes ATP (PubMed:28874591).

Targets specific substrates for degradation by the Clp complex (PubMed:11923310, PubMed:22710082).

Can perform chaperone functions in the absence of CLPP. Enhances the DNA-binding activity of TFAM and is required for maintaining a normal mitochondrial nucleoid structure (PubMed:22841477).

ATP-dependent unfoldase that stimulates the incorporation of the pyridoxal phosphate cofactor into 5-aminolevulinate synthase, thereby activating 5-aminolevulinate (ALA) synthesis, the first step in heme biosynthesis (PubMed:28874591).

Important for efficient erythropoiesis through up-regulation of heme biosynthesis (PubMed:25957689, PubMed:28874591).

---

Note: This product is for in vitro research use only