

Cofilin Rabbit mAb

Catalog No: #52742

Package Size: #52742-1 50ul #52742-2 100ul

Orders: order@signalwayantibody.com

Support: tech@signalwayantibody.com

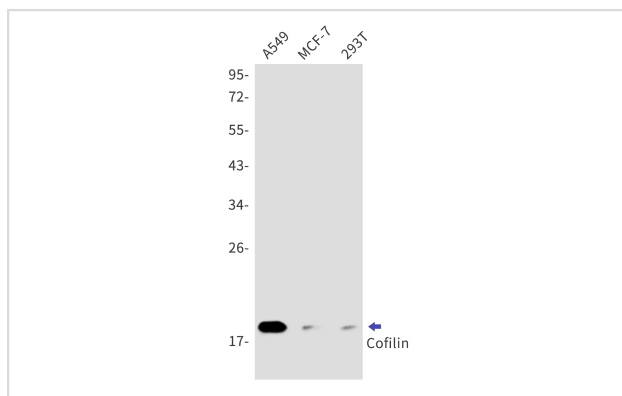
Description

Product Name	Cofilin Rabbit mAb
Host Species	Recombinant Rabbit
Clonality	Monoclonal antibody
Clone No.	S06-2C0
Isotype	IgG
Purification	Affinity Purified
Applications	WB IHC IF
Species Reactivity	Human,Mouse,Rat
Immunogen Description	A synthetic peptide of human Cofilin
Conjugates	Unconjugated
Modification	Unmodification
Other Names	CFL; cofilin; HEL-S-15
Accession No.	Swiss-Prot:P23528GenelD:1072
Uniprot	P23528
GenelD	1072
Calculated MW	Calculated MW:19 kDa,Observed MW:19 kDa
Concentration	0.3 mg/ml
Formulation	50mM Tris-Glycine(pH 7.4), 0.15M NaCl, 40% Glycerol, 0.01% Sodium azide and 0.05% BSA
Storage	Store at 4°C short term. Aliquot and store at -20°C long term. Avoid freeze/thaw cycles.

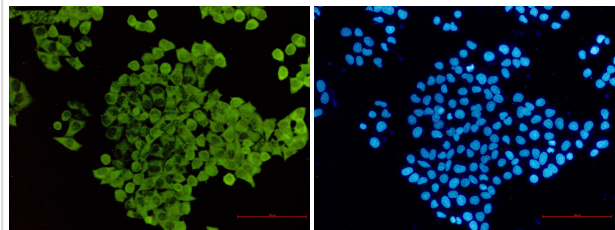
Application Details

WB: 1/1000 IHC: 1/50 ICC/IF: 1/50

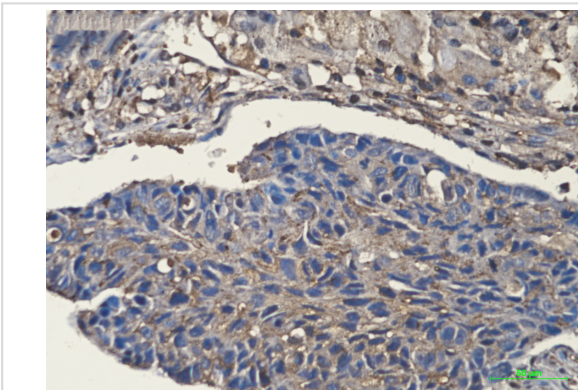
Images



Western blot detection of Cofilin in A549,MCF-7,293T cell lysates using Cofilin Rabbit mAb(1:1000 diluted).Predicted band size:19kDa.Observed band size:19kDa.



Immunocytochemistry of Cofilin (green) in HeLa using Cofilin Rabbit mAb at dilution 1/50, and DAPI (blue)



Immunohistochemical of Cofilin in Human lung cancer tissue using Cofilin antibody at dilution 1/2

Background

The protein encoded by this gene can polymerize and depolymerize F-actin and G-actin in a pH-dependent manner. Increased phosphorylation of this protein by LIM kinase aids in Rho-induced reorganization of the actin cytoskeleton. Cofilin is a widely distributed intracellular actin-modulating protein that binds and depolymerizes filamentous F-actin and inhibits the polymerization of monomeric G-actin in a pH-dependent manner. It is involved in the translocation of actin-cofilin complex from cytoplasm to nucleus. [supplied by OMIM, Apr 2004]

Note: This product is for in vitro research use only