

CPS1 Rabbit mAb

Catalog No: #52743

Package Size: #52743-1 50ul #52743-2 100ul

Orders: order@signalwayantibody.com

Support: tech@signalwayantibody.com

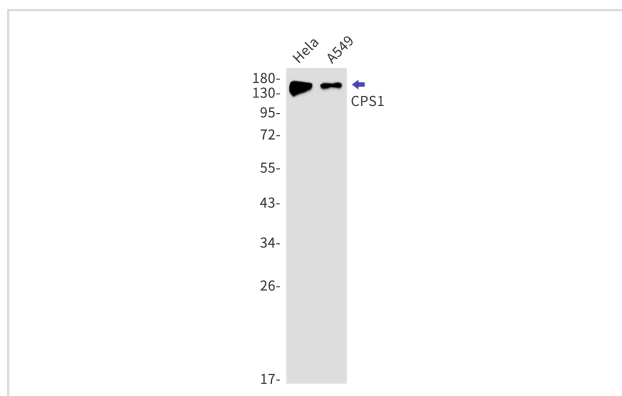
Description

Product Name	CPS1 Rabbit mAb
Host Species	Recombinant Rabbit
Clonality	Monoclonal antibody
Clone No.	S01-2A0
Isotype	IgG
Purification	Affinity Purified
Applications	WB IHC
Species Reactivity	Human,Mouse,Rat
Immunogen Description	A synthetic peptide of human CPS1
Conjugates	Unconjugated
Modification	Unmodification
Other Names	PHN; CPSASE1
Accession No.	Swiss-Prot:P31327GenelD:1373
Uniprot	P31327
GenelD	1373
Calculated MW	Calculated MW:165 kDa,Observed MW:160 kDa
Concentration	0.3 mg/ml
Formulation	50mM Tris-Glycine(pH 7.4), 0.15M NaCl, 40% Glycerol, 0.01% Sodium azide and 0.05% BSA
Storage	Store at 4°C short term. Aliquot and store at -20°C long term. Avoid freeze/thaw cycles.

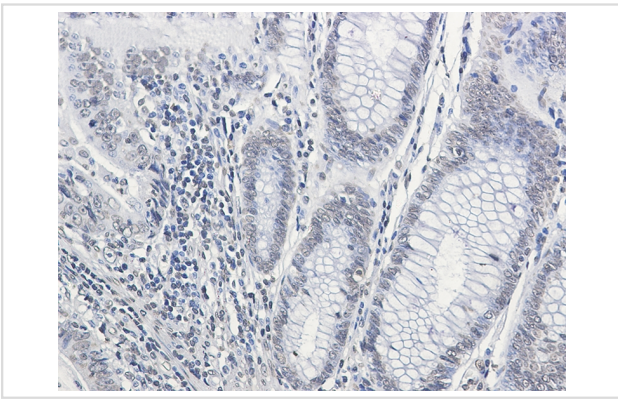
Application Details

WB: 1/1000 IHC: 1/50

Images



Western blot detection of CPS1 in HeLa,A549 cell lysates using CPS1 Rabbit mAb(1:1000 diluted).Predicted band size:165kDa.Observed band size:160kDa.



Immunohistochemistry of CPS1 in paraffin-embedded Human colon cancer tissue using CPS1 Rabbit mAb at dilution 1/50

Background

The mitochondrial enzyme encoded by this gene catalyzes synthesis of carbamoyl phosphate from ammonia and bicarbonate. This reaction is the first committed step of the urea cycle, which is important in the removal of excess urea from cells. The encoded protein may also represent a core mitochondrial nucleoid protein. Three transcript variants encoding different isoforms have been found for this gene. The short isoform may not be localized to the mitochondrion. Mutations in this gene have been associated with carbamoyl phosphate synthetase deficiency, susceptibility to persistent pulmonary hypertension, and susceptibility to venoocclusive disease after bone marrow transplantation.[provided by RefSeq, May 2010]

Note: This product is for in vitro research use only