

CrkL Rabbit mAb

Catalog No: #52744

Package Size: #52744-1 50ul #52744-2 100ul

Orders: order@signalwayantibody.com

Support: tech@signalwayantibody.com

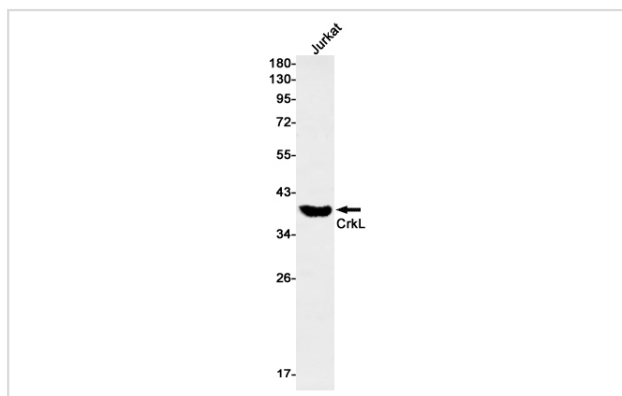
Description

Product Name	CrkL Rabbit mAb
Host Species	Recombinant Rabbit
Clonality	Monoclonal antibody
Clone No.	S02-3D8
Isotype	IgG
Purification	Affinity Purified
Applications	WB
Species Reactivity	Human
Immunogen Description	A synthetic peptide of human CrkL
Conjugates	Unconjugated
Modification	Unmodification
Other Names	Crk L; Crk like protein; Crkl; Crkol;
Accession No.	Swiss-Prot:P46109GenelD:1399
Uniprot	P46109
GenelD	1399
Calculated MW	Calculated MW:34 kDa,Observed MW:39 kDa
Concentration	0.3 mg/ml
Formulation	50mM Tris-Glycine(pH 7.4), 0.15M NaCl, 40% Glycerol, 0.01% Sodium azide and 0.05% BSA
Storage	Store at 4°C short term. Aliquot and store at -20°C long term. Avoid freeze/thaw cycles.

Application Details

WB: 1/1000

Images



Western blot detection of CrkL in Jurkat cell lysates using CrkL Rabbit mAb(1:1000 diluted).Predicted band size:34kDa.Observed band size:34kDa.

Background

May mediate the transduction of intracellular signals.

Note: This product is for in vitro research use only