

## Cyclin B2 Rabbit mAb

Catalog No: #52746

Package Size: #52746-1 50ul #52746-2 100ul

Orders: order@signalwayantibody.com

Support: tech@signalwayantibody.com

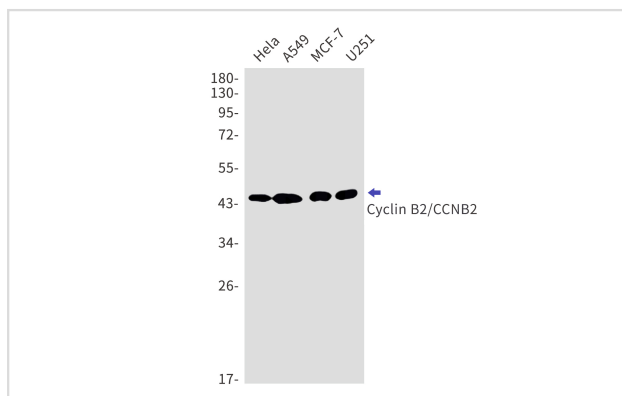
## Description

Product Name	Cyclin B2 Rabbit mAb
Host Species	Recombinant Rabbit
Clonality	Monoclonal antibody
Clone No.	S05-3A6
Isotype	IgG
Purification	Affinity Purified
Applications	WB
Species Reactivity	Human,Mouse,Rat
Immunogen Description	Recombinant protein of human Cyclin B2/CCNB2
Conjugates	Unconjugated
Modification	Unmodification
Other Names	ccnb2; CycB2; Cyclin B2; G2/mitotic specific cyclin B2;
Accession No.	Swiss-Prot:O95067GeneID:9133
Uniprot	O95067
GeneID	9133
Calculated MW	Calculated MW:45 kDa,Observed MW:45 kDa
Concentration	0.3 mg/ml
Formulation	50mM Tris-Glycine(pH 7.4), 0.15M NaCl, 40% Glycerol, 0.01% Sodium azide and 0.05% BSA
Storage	Store at 4°C short term. Aliquot and store at -20°C long term. Avoid freeze/thaw cycles.

## Application Details

WB: 1/1000

## Images



Western blot detection of Cyclin B2/CCNB2 in HeLa,A549,MCF-7,U251 cell lysates using Cyclin B2/CCNB2 Rabbit mAb(1:1000 diluted).Predicted band size:45kDa.Observed band size:45kDa.

## Background

---

Cyclin B2 is a member of the cyclin family, specifically the B-type cyclins. The B-type cyclins, B1 and B2, associate with p34cdc2 and are essential components of the cell cycle regulatory machinery. B1 and B2 differ in their subcellular localization. Cyclin B1 co-localizes with microtubules, whereas cyclin B2 is primarily associated with the Golgi region. Cyclin B2 also binds to transforming growth factor beta RII and thus cyclin B2/cdc2 may play a key role in transforming growth factor beta-mediated cell cycle control. [provided by RefSeq, Jul 2008]

---

Note: This product is for in vitro research use only