

Cystatin B Rabbit mAb

Catalog No: #52747

Package Size: #52747-1 50ul #52747-2 100ul

Orders: order@signalwayantibody.com

Support: tech@signalwayantibody.com

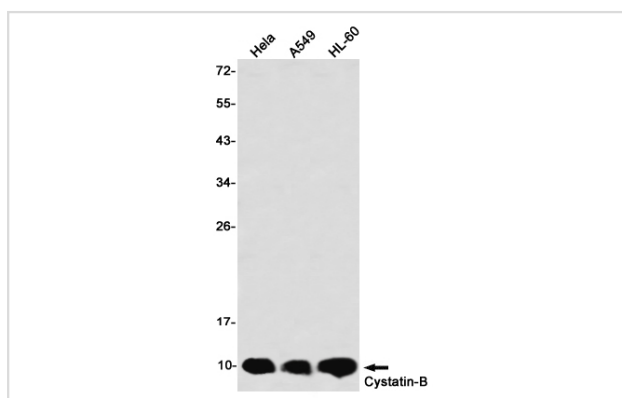
Description

| | |
|-----------------------|--|
| Product Name | Cystatin B Rabbit mAb |
| Host Species | Recombinant Rabbit |
| Clonality | Monoclonal antibody |
| Clone No. | S02-7D7 |
| Isotype | IgG |
| Purification | Affinity Purified |
| Applications | WB IHC |
| Species Reactivity | Human,Rat |
| Immunogen Description | A synthetic peptide of human Cystatin-B |
| Conjugates | Unconjugated |
| Modification | Unmodification |
| Other Names | PME; ULD; CST6; EPM1; STFB; CPI-B; EPM1A |
| Accession No. | Swiss-Prot:P04080GenelD:1476 |
| Uniprot | P04080 |
| GenelD | 1476 |
| Calculated MW | Calculated MW:11 kDa,Observed MW:11 kDa |
| Concentration | 0.3 mg/ml |
| Formulation | 50mM Tris-Glycine(pH 7.4), 0.15M NaCl, 40% Glycerol, 0.01% Sodium azide and 0.05% BSA |
| Storage | Store at 4°C short term. Aliquot and store at -20°C long term. Avoid freeze/thaw cycles. |

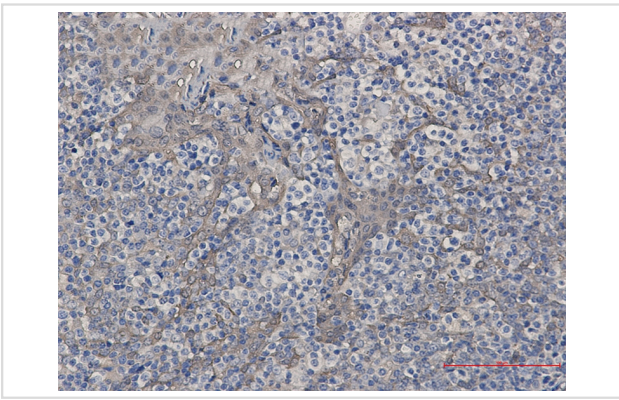
Application Details

WB: 1/1000 IHC: 1/50

Images



Western blot detection of Cystatin-B in HeLa,A549,HL-60 using Cystatin-B Rabbit mAb(1:1000 diluted)



Immunohistochemistry of Cystatin-B in paraffin-embedded Human tonsil using Cystatin-B Rabbit mAb at dilution 1/50

Background

This is an intracellular thiol proteinase inhibitor. Tightly binding reversible inhibitor of cathepsins L, H and B.

Note: This product is for in vitro research use only