

## eIF4B Rabbit mAb

Catalog No: #52752

Package Size: #52752-1 50ul #52752-2 100ul

Orders: order@signalwayantibody.com

Support: tech@signalwayantibody.com

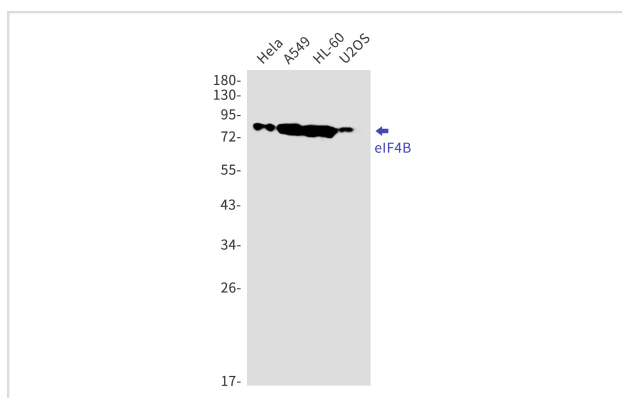
## Description

Product Name	eIF4B Rabbit mAb
Host Species	Recombinant Rabbit
Clonality	Monoclonal antibody
Clone No.	S07-2H2
Isotype	IgG
Purification	Affinity Purified
Applications	WB IHC
Species Reactivity	Human
Immunogen Description	A synthetic peptide of human eIF4B
Conjugates	Unconjugated
Modification	Unmodification
Other Names	EIF-4B; PRO1843
Accession No.	Swiss-Prot:P23588GenelD:1975
Uniprot	P23588
GenelD	1975
Calculated MW	Calculated MW:69 kDa,Observed MW:80 kDa
Concentration	0.3 mg/ml
Formulation	50mM Tris-Glycine(pH 7.4), 0.15M NaCl, 40% Glycerol, 0.01% Sodium azide and 0.05% BSA
Storage	Store at 4°C short term. Aliquot and store at -20°C long term. Avoid freeze/thaw cycles.

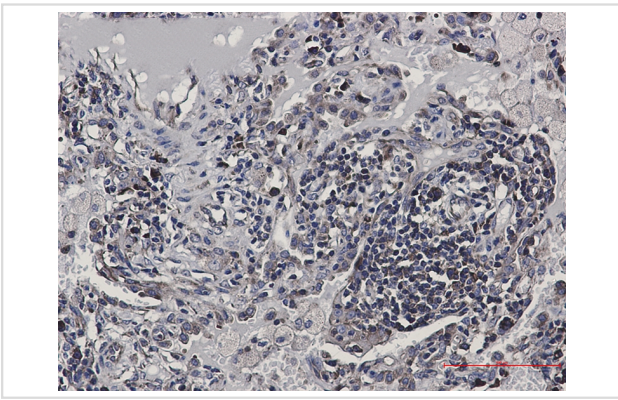
## Application Details

WB: 1/1000 IHC: 1/50

## Images



Western blot detection of eIF4B in HeLa,A549,HL-60,U2OS cell lysates using eIF4B Rabbit mAb(1:1000 diluted).Predicted band size:69kDa.Observed band size:80kDa.



Immunohistochemistry of eIF4B in paraffin-embedded Human lung cancer tissue using eIF4B Rabbit mAb at dilution 1/50

## Background

Required for the binding of mRNA to ribosomes. Functions in close association with EIF4-F and EIF4-A. Binds near the 5'-terminal cap of mRNA in presence of EIF-4F and ATP. Promotes the ATPase activity and the ATP-dependent RNA unwinding activity of both EIF4-A and EIF4-F.

Note: This product is for in vitro research use only