

## Entactin Rabbit mAb

Catalog No: #52753

Package Size: #52753-1 50ul #52753-2 100ul

Orders: order@signalwayantibody.com

Support: tech@signalwayantibody.com

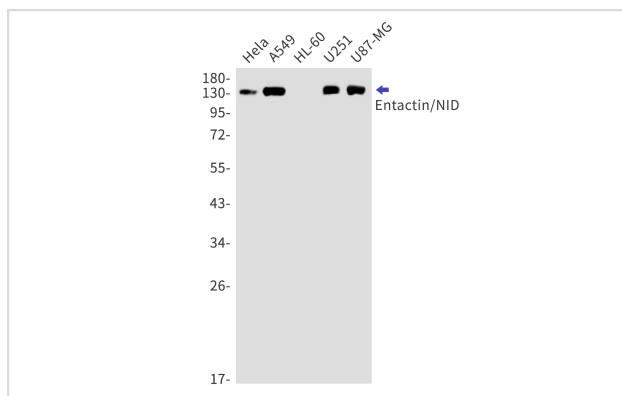
## Description

Product Name	Entactin Rabbit mAb
Host Species	Recombinant Rabbit
Clonality	Monoclonal antibody
Clone No.	S08-3H3
Isotype	IgG
Purification	Affinity Purified
Applications	WB IHC
Species Reactivity	Human,Mouse,Rat
Immunogen Description	Recombinant protein of human Entactin/NID
Conjugates	Unconjugated
Modification	Unmodification
Other Names	Enactin; Ent; Entactin 1; Entactin; NID 1; NID; Nid1; Nidogen 1; Nidogen;
Accession No.	Swiss-Prot:P14543GenelD:4811
Uniprot	P14543
GenelD	4811
Calculated MW	Calculated MW:136 kDa,Observed MW:136 kDa
Concentration	0.3 mg/ml
Formulation	50mM Tris-Glycine(pH 7.4), 0.15M NaCl, 40% Glycerol, 0.01% Sodium azide and 0.05% BSA
Storage	Store at 4°C short term. Aliquot and store at -20°C long term. Avoid freeze/thaw cycles.

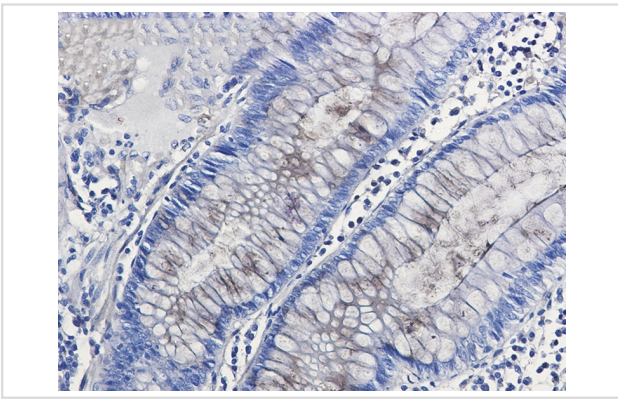
## Application Details

WB: 1/1000 IHC: 1/100

## Images



Western blot detection of Entactin/NID in HeLa,A549,HL-60,U251,U87-MG cell lysates using Entactin/NID Rabbit mAb(1:1000 diluted).Predicted band size:136kDa.Observed band size:136kDa.



Immunohistochemistry of Entactin/NID in paraffin-embedded Human colon cancer tissue using Entactin/NID Rabbit mAb at dilution 1/50

## Background

Sulfated glycoprotein widely distributed in basement membranes and tightly associated with laminin. Also binds to collagen IV and perlecan. It probably has a role in cell-extracellular matrix interactions.

Note: This product is for in vitro research use only