

FKBP6 Rabbit mAb

Catalog No: #52760

Package Size: #52760-1 50ul #52760-2 100ul

Orders: order@signalwayantibody.com

Support: tech@signalwayantibody.com

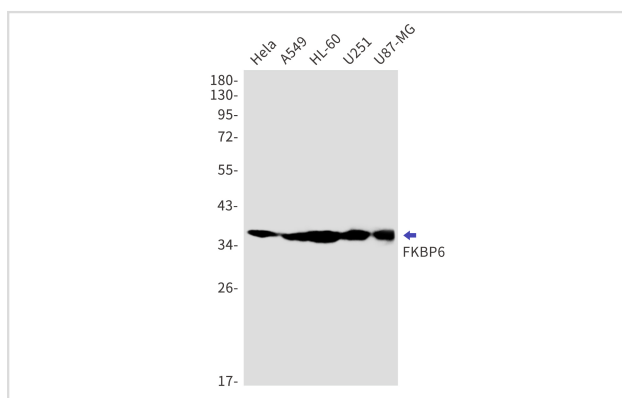
Description

Product Name	FKBP6 Rabbit mAb
Host Species	Recombinant Rabbit
Clonality	Monoclonal antibody
Clone No.	S05-4G2
Isotype	IgG
Purification	Affinity Purified
Applications	WB
Species Reactivity	Human,Mouse,Rat
Immunogen Description	A synthetic peptide of human FKBP6
Conjugates	Unconjugated
Modification	Unmodification
Other Names	FKBP36
Accession No.	Swiss-Prot:O75344GeneID:8468
Uniprot	O75344
GeneID	8468
Calculated MW	Calculated MW:37 kDa,Observed MW:37 kDa
Concentration	0.3 mg/ml
Formulation	50mM Tris-Glycine(pH 7.4), 0.15M NaCl, 40% Glycerol, 0.01% Sodium azide and 0.05% BSA
Storage	Store at 4°C short term. Aliquot and store at -20°C long term. Avoid freeze/thaw cycles.

Application Details

WB: 1/2000-1/10000

Images



Western blot detection of FKBP6 in HeLa,A549,HL-60,U251,U87-MG cell lysates using FKBP6 Rabbit mAb(1:1000 diluted).Predicted band size:37kDa.Observed band size:37kDa.

Background

Co-chaperone required during spermatogenesis to repress transposable elements and prevent their mobilization, which is essential for the germline integrity. Acts via the piRNA metabolic process, which mediates the repression of transposable elements during meiosis by forming complexes composed of piRNAs and Piwi proteins and govern the methylation and subsequent repression of transposons. Acts as a co-chaperone via its interaction with HSP90 and is required for the piRNA amplification process, the secondary piRNA biogenesis. May be required together with HSP90 in removal of 16 nucleotide ping-pong by-products from Piwi complexes, possibly facilitating turnover of Piwi complexes (By similarity).

Note: This product is for in vitro research use only