

Flotillin 1 Rabbit mAb

Catalog No: #52761

Package Size: #52761-1 50ul #52761-2 100ul

Orders: order@signalwayantibody.com

Support: tech@signalwayantibody.com

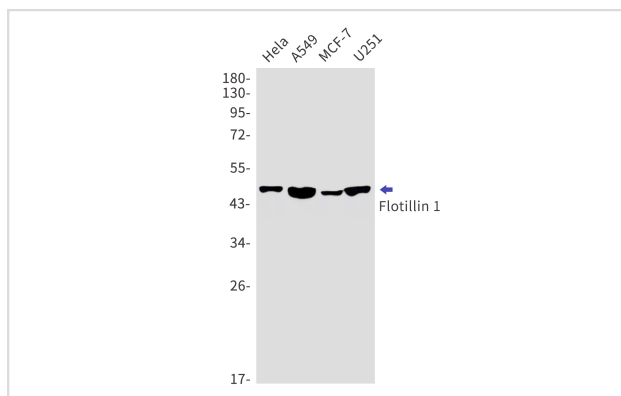
Description

Product Name	Flotillin 1 Rabbit mAb
Host Species	Recombinant Rabbit
Clonality	Monoclonal antibody
Clone No.	S08-0G5
Isotype	IgG
Purification	Affinity Purified
Applications	WB
Species Reactivity	Human,Mouse
Immunogen Description	A synthetic peptide of human Flotillin 1
Conjugates	Unconjugated
Modification	Unmodification
Other Names	Flotillin1 ; Flotillin 1; Reggie 2; FLOT1; Integral membrane component of caveolae;
Accession No.	Swiss-Prot:O75955GeneID:10211
Uniprot	O75955
GeneID	10211
Calculated MW	Calculated MW:47 kDa,Observed MW:49 kDa
Concentration	0.3 mg/ml
Formulation	50mM Tris-Glycine(pH 7.4), 0.15M NaCl, 40% Glycerol, 0.01% Sodium azide and 0.05% BSA
Storage	Store at 4°C short term. Aliquot and store at -20°C long term. Avoid freeze/thaw cycles.

Application Details

WB: 1/1000

Images



Western blot detection of Flotillin 1 in HeLa,A549,MCF-7,U251 cell lysates using Flotillin 1 Rabbit mAb(1:1000 diluted).Predicted band size:47kDa.Observed band size:49kDa.

Background

This gene encodes an protein that localizes to the caveolae, which are small domains on the inner cell membranes. This protein plays a role in vesicle trafficking and cell morphology. Alternative splicing results in multiple transcript variants. [provided by RefSeq, Jan 2016]

Note: This product is for in vitro research use only