

gamma Tubulin Rabbit mAb

Catalog No: #52762

Package Size: #52762-1 50ul #52762-2 100ul

Orders: order@signalwayantibody.com

Support: tech@signalwayantibody.com

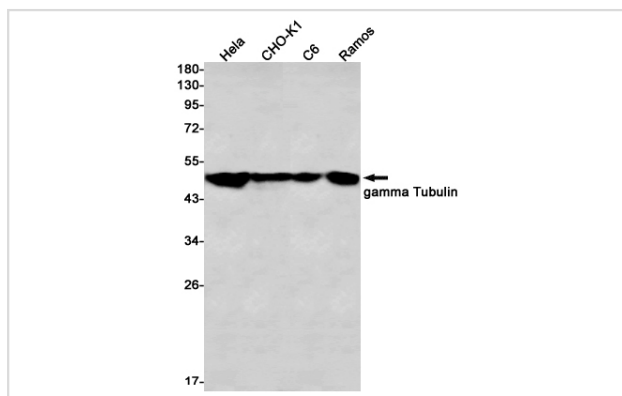
Description

Product Name	gamma Tubulin Rabbit mAb
Host Species	Recombinant Rabbit
Clonality	Monoclonal antibody
Clone No.	S06-6A6
Isotype	IgG
Purification	Affinity Purified
Applications	WB
Species Reactivity	Human,Mouse,Rat
Immunogen Description	Recombinant protein of human gamma Tubulin
Conjugates	Unconjugated
Modification	Unmodification
Other Names	TUBG; GCP-1; CDCBM4; TUBGCP1
Accession No.	Swiss-Prot:P23258GenelD:7283
Uniprot	P23258
GeneID	7283
Calculated MW	Calculated MW:51 kDa,Observed MW:50 kDa
Concentration	0.3 mg/ml
Formulation	50mM Tris-Glycine(pH 7.4), 0.15M NaCl, 40% Glycerol, 0.01% Sodium azide and 0.05% BSA
Storage	Store at 4°C short term. Aliquot and store at -20°C long term. Avoid freeze/thaw cycles.

Application Details

WB: 1/1000

Images



Western blot detection of gamma Tubulin in HeLa, CHO-K1, C6, Ramos cell lysates using gamma Tubulin Rabbit mAb(1:1000 diluted). Predicted band size: 51kDa. Observed band size: 51kDa.

Background

Tubulin is the major constituent of microtubules. The gamma chain is found at microtubule organizing centers (MTOC) such as the spindle poles or the centrosome. Pericentriolar matrix component that regulates alpha/beta chain minus-end nucleation, centrosome duplication and spindle formation.

Note: This product is for in vitro research use only