

GRK6 Rabbit mAb

Catalog No: #52766

Package Size: #52766-1 50ul #52766-2 100ul

Orders: order@signalwayantibody.com

Support: tech@signalwayantibody.com

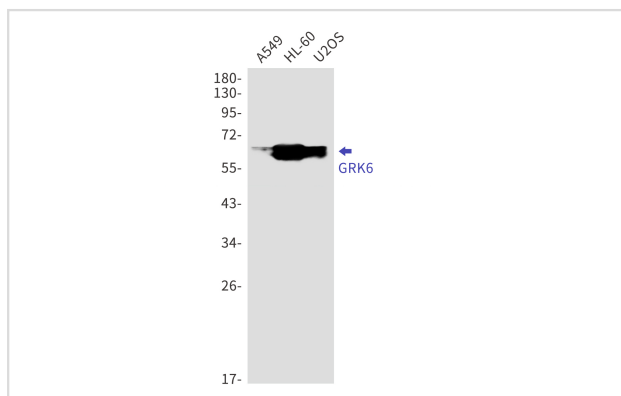
Description

Product Name	GRK6 Rabbit mAb
Host Species	Recombinant Rabbit
Clonality	Monoclonal antibody
Clone No.	S07-3E4
Isotype	IgG
Purification	Affinity Purified
Applications	WB
Species Reactivity	Human,Mouse
Immunogen Description	A synthetic peptide of human GRK6
Conjugates	Unconjugated
Modification	Unmodification
Other Names	GPRK6
Accession No.	Swiss-Prot:P43250GenelD:2870
Uniprot	P43250
GenelD	2870
Calculated MW	Calculated MW:66 kDa,Observed MW:66 kDa
Concentration	0.3 mg/ml
Formulation	50mM Tris-Glycine(pH 7.4), 0.15M NaCl, 40% Glycerol, 0.01% Sodium azide and 0.05% BSA
Storage	Store at 4°C short term. Aliquot and store at -20°C long term. Avoid freeze/thaw cycles.

Application Details

WB: 1/1000

Images



Western blot detection of GRK6 in A549,HL-60,U2OS cell lysates using GRK6 Rabbit mAb(1:1000 diluted).Predicted band size:66kDa.Observed band size:66kDa.

Background

Specifically phosphorylates the activated forms of G protein-coupled receptors. Such receptor phosphorylation initiates beta-arrestin-mediated receptor desensitization, internalization, and signaling events leading to their desensitization. Seems to be involved in the desensitization of D2-like dopamine receptors in striatum and chemokine receptor CXCR4 which is critical for CXCL12-induced cell chemotaxis (By similarity).

Phosphorylates rhodopsin (RHO) (in vitro) and a non G-protein-coupled receptor: LRP6 during Wnt signaling (in vitro).

Note: This product is for in vitro research use only