

Hsp90 beta Rabbit mAb

Catalog No: #52777

Package Size: #52777-1 50ul #52777-2 100ul

Orders: order@signalwayantibody.com

Support: tech@signalwayantibody.com

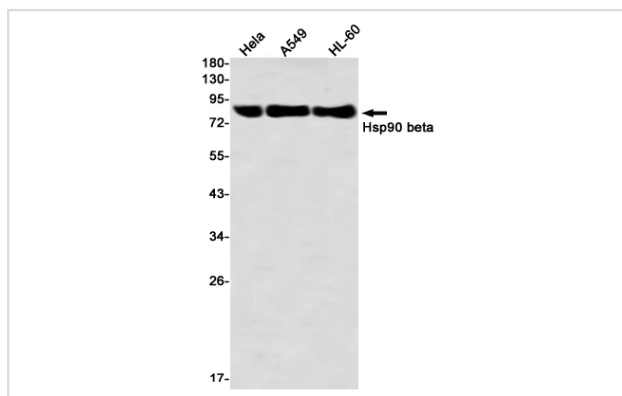
Description

Product Name	Hsp90 beta Rabbit mAb
Host Species	Recombinant Rabbit
Clonality	Monoclonal antibody
Clone No.	S03-8F1
Isotype	IgG
Purification	Affinity Purified
Applications	WB IHC
Species Reactivity	Human,Mouse,Rat
Immunogen Description	A synthetic peptide of human Hsp90 beta
Conjugates	Unconjugated
Modification	Unmodification
Other Names	HSP84; HSPC2; HSPCB; D6S182; HSP90B
Accession No.	Swiss-Prot:P08238GenelD:3326
Uniprot	P08238
GenelD	3326
Calculated MW	Calculated MW:85,83 kDa,Observed MW:90 kDa
Concentration	0.3 mg/ml
Formulation	50mM Tris-Glycine(pH 7.4), 0.15M NaCl, 40% Glycerol, 0.01% Sodium azide and 0.05% BSA
Storage	Store at 4°C short term. Aliquot and store at -20°C long term. Avoid freeze/thaw cycles.

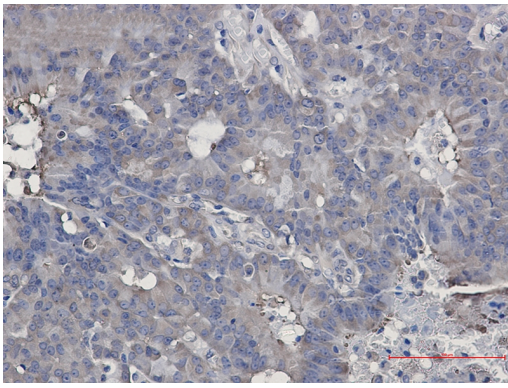
Application Details

WB: 1/2000-1/10000 IHC: 1/30

Images



Western blot detection of Hsp90 beta in HeLa,A549,HL-60 using Hsp90 beta Rabbit mAb(1:1000 diluted)



Immunohistochemistry of Hsp90 beta in paraffin-embedded Human breast cancer tissue using Hsp90 beta Rabbit mAb at dilution 1/50

Background

Molecular chaperone that promotes the maturation, structural maintenance and proper regulation of specific target proteins involved for instance in cell cycle control and signal transduction. Undergoes a functional cycle linked to its ATPase activity. This cycle probably induces conformational changes in the client proteins, thereby causing their activation. Interacts dynamically with various co-chaperones that modulate its substrate recognition, ATPase cycle and chaperone function

Note: This product is for in vitro research use only