

IGF1 Receptor Rabbit mAb

Catalog No: #52778

Package Size: #52778-1 50ul #52778-2 100ul

Orders: order@signalwayantibody.com

Support: tech@signalwayantibody.com

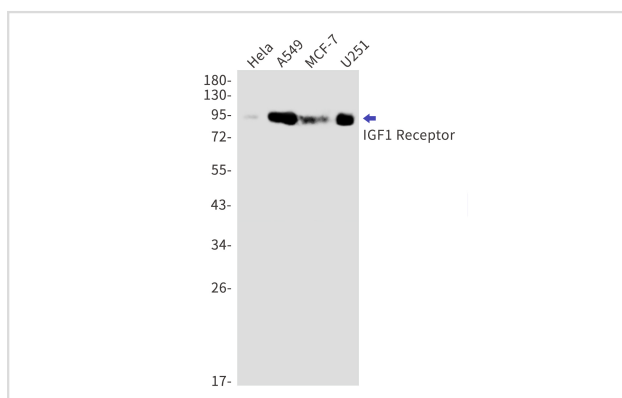
Description

Product Name	IGF1 Receptor Rabbit mAb
Host Species	Recombinant Rabbit
Clonality	Monoclonal antibody
Clone No.	S08-3C8
Isotype	IgG
Purification	Affinity Purified
Applications	WB
Species Reactivity	Human
Immunogen Description	Recombinant protein of human IGF1 Receptor
Conjugates	Unconjugated
Modification	Unmodification
Other Names	IGFR; CD221; IGFIR; JTK13
Accession No.	Swiss-Prot:P08069GenelD:3480
Uniprot	P08069
GenelD	3480
Calculated MW	Calculated MW:155 kDa,Observed MW:95 kDa
Concentration	0.3 mg/ml
Formulation	50mM Tris-Glycine(pH 7.4), 0.15M NaCl, 40% Glycerol, 0.01% Sodium azide and 0.05% BSA
Storage	Store at 4°C short term. Aliquot and store at -20°C long term. Avoid freeze/thaw cycles.

Application Details

WB: 1/1000

Images



Western blot detection of IGF1 Receptor in HeLa,A549,MCF-7,U251 cell lysates using IGF1 Receptor Rabbit mAb(1:1000 diluted).Predicted band size:155kDa.Observed band size:95kDa.

Background

This receptor binds insulin-like growth factor with a high affinity. It has tyrosine kinase activity. The insulin-like growth factor I receptor plays a critical role in transformation events. Cleavage of the precursor generates alpha and beta subunits. It is highly overexpressed in most malignant tissues where it functions as an anti-apoptotic agent by enhancing cell survival. Alternatively spliced transcript variants encoding distinct isoforms have been found for this gene. [provided by RefSeq, May 2014]

Note: This product is for in vitro research use only