

Insulin Degrading Enzyme Rabbit mAb

Catalog No: #52784

Package Size: #52784-1 50ul #52784-2 100ul

Orders: order@signalwayantibody.com

Support: tech@signalwayantibody.com

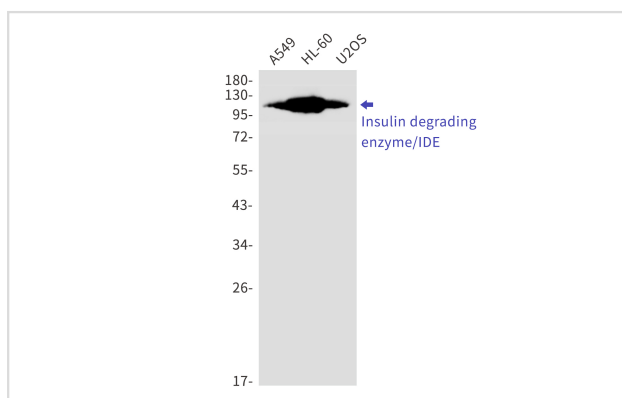
Description

Product Name	Insulin Degrading Enzyme Rabbit mAb
Host Species	Recombinant Rabbit
Clonality	Monoclonal antibody
Clone No.	S04-4E8
Isotype	IgG
Purification	Affinity Purified
Applications	WB IF
Species Reactivity	Human,Mouse,Rat
Immunogen Description	A synthetic peptide of human Insulin degrading enzyme/IDE
Conjugates	Unconjugated
Modification	Unmodification
Other Names	INSULYSIN; Insulin degrading enzyme; IDE;
Accession No.	Swiss-Prot:P14735GenelD:3416
Uniprot	P14735
GenelD	3416
Calculated MW	Calculated MW:118 kDa,Observed MW:118 kDa
Concentration	0.3 mg/ml
Formulation	50mM Tris-Glycine(pH 7.4), 0.15M NaCl, 40% Glycerol, 0.01% Sodium azide and 0.05% BSA
Storage	Store at 4°C short term. Aliquot and store at -20°C long term. Avoid freeze/thaw cycles.

Application Details

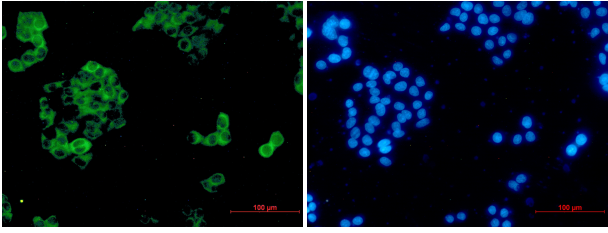
WB: 1/2000-1/10000 ICC/IF: 1/20

Images



Western blot detection of Insulin degrading enzyme/IDE in A549,HL-60,U2OS cell lysates using Insulin degrading enzyme/IDE Rabbit mAb(1:1000 diluted).Predicted band size:118kDa.Observed band size:118kDa.

Immunocytochemistry of Insulin degrading enzyme/IDE (green) in hela using Insulin degrading enzyme/IDE Rabbit mAb at dilution 1/50, and DAPI(blue)



Background

Plays a role in the cellular breakdown of insulin, APP peptides, IAPP peptides, natriuretic peptides, glucagon, bradykinin, kallidin, and other peptides, and thereby plays a role in intercellular peptide signaling

Note: This product is for in vitro research use only