

## KIFAP3 Rabbit mAb

Catalog No: #52786

Package Size: #52786-1 50ul #52786-2 100ul

Orders: order@signalwayantibody.com

Support: tech@signalwayantibody.com

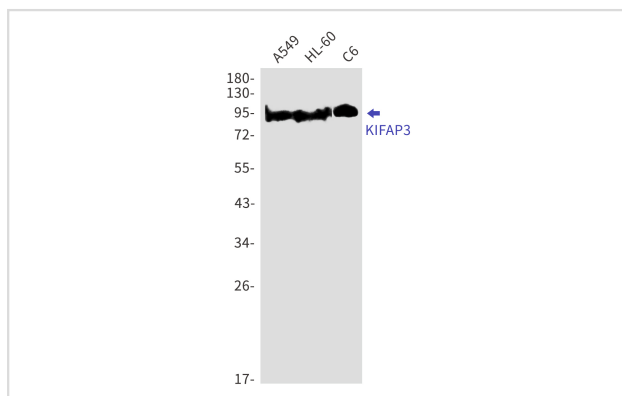
## Description

Product Name	KIFAP3 Rabbit mAb
Host Species	Recombinant Rabbit
Clonality	Monoclonal antibody
Clone No.	S03-6C6
Isotype	IgG
Purification	Affinity Purified
Applications	WB IHC
Species Reactivity	Human,Mouse,Rat
Immunogen Description	A synthetic peptide of human KIFAP3
Conjugates	Unconjugated
Modification	Unmodification
Other Names	FLA3; KAP3; SMAP; KAP-1; KAP-3; Smg-GDS; dJ190I16.1
Accession No.	Swiss-Prot:Q92845GeneID:22920
Uniprot	Q92845
GeneID	22920
Calculated MW	Calculated MW:91 kDa,Observed MW:91 kDa
Concentration	0.3 mg/ml
Formulation	50mM Tris-Glycine(pH 7.4), 0.15M NaCl, 40% Glycerol, 0.01% Sodium azide and 0.05% BSA
Storage	Store at 4°C short term. Aliquot and store at -20°C long term. Avoid freeze/thaw cycles.

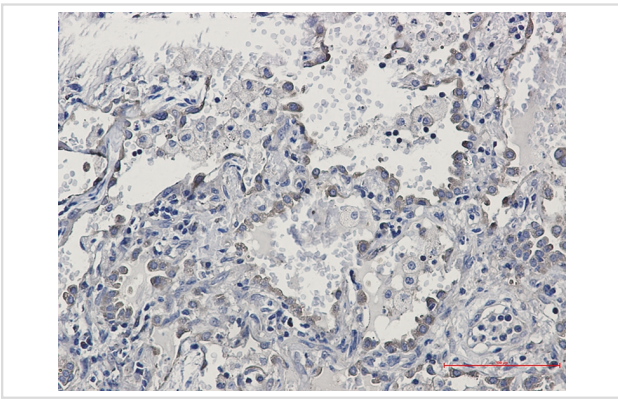
## Application Details

WB: 1/1000 IHC: 1/50

## Images



Western blot detection of KIFAP3 in A549,HL-60,C6 cell lysates using KIFAP3 Rabbit mAb(1:1000 diluted).Predicted band size:91kDa.Observed band size:91kDa.



Immunohistochemistry of KIFAP3 in paraffin-embedded Human lung cancer tissue using KIFAP3 Rabbit mAb at dilution 1/50

## Background

Involved in tethering the chromosomes to the spindle pole and in chromosome movement. Binds to the tail domain of the KIF3A/KIF3B heterodimer to form a heterotrimeric KIF3 complex and may regulate the membrane binding of this complex (By similarity)

Note: This product is for in vitro research use only