

KLF4 Rabbit mAb

Catalog No: #52787

Package Size: #52787-1 50ul #52787-2 100ul

Orders: order@signalwayantibody.com

Support: tech@signalwayantibody.com

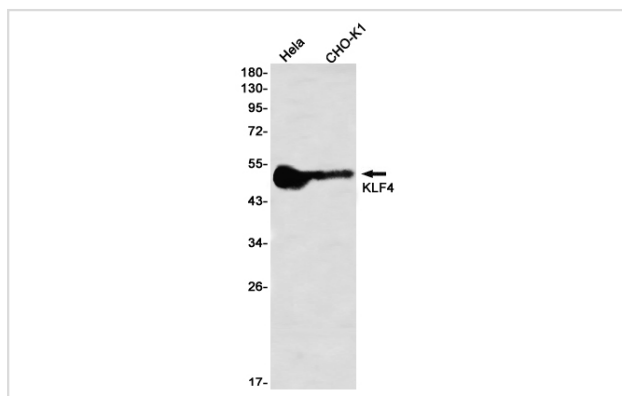
Description

Product Name	KLF4 Rabbit mAb
Host Species	Recombinant Rabbit
Clonality	Monoclonal antibody
Clone No.	S03-218
Isotype	IgG
Purification	Affinity Purified
Applications	WB
Species Reactivity	Human,Mouse,Rat
Immunogen Description	Recombinant protein of mouse KLF4
Conjugates	Unconjugated
Modification	Unmodification
Other Names	EZF; Zie; Gklf
Accession No.	Swiss-Prot:Q60793GeneID:16600
Uniprot	Q60793
GeneID	16600
Calculated MW	Calculated MW:52 kDa,Observed MW:52 kDa
Concentration	0.3 mg/ml
Formulation	50mM Tris-Glycine(pH 7.4), 0.15M NaCl, 40% Glycerol, 0.01% Sodium azide and 0.05% BSA
Storage	Store at 4°C short term. Aliquot and store at -20°C long term. Avoid freeze/thaw cycles.

Application Details

WB: 1/1000;

Images



Western blot detection of KLF4 in HeLa,CHO-K1 using KLF4 Rabbit mAb(1:1000 diluted)

Background

Transcription factor; can act both as activator and as repressor. Binds the 5'-CACCC-3' core sequence

Note: This product is for in vitro research use only