

## LAMP2 Rabbit mAb

Catalog No: #52790

Package Size: #52790-1 50ul #52790-2 100ul

Orders: order@signalwayantibody.com

Support: tech@signalwayantibody.com

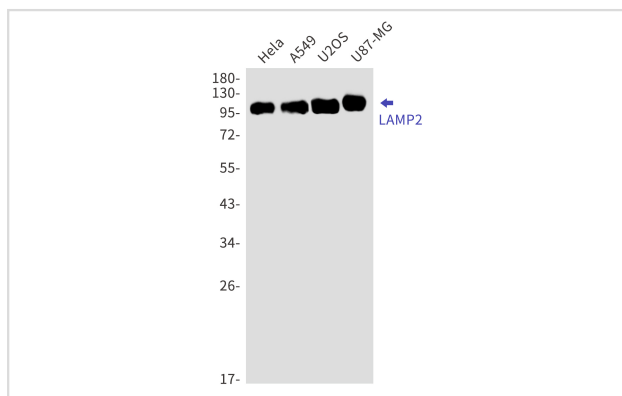
## Description

Product Name	LAMP2 Rabbit mAb
Host Species	Recombinant Rabbit
Clonality	Monoclonal antibody
Clone No.	S03-0B5
Isotype	IgG
Purification	Affinity Purified
Applications	WB IHC
Species Reactivity	Human
Immunogen Description	Recombinant protein of human LAMP2
Conjugates	Unconjugated
Modification	Unmodification
Other Names	DND; LAMPB; CD107b; LAMP-2; LGP-96; LGP110
Accession No.	Swiss-Prot:P13473GenelD:3920
Uniprot	P13473
GenelD	3920
Calculated MW	Calculated MW:45 kDa,Observed MW:110 kDa
Concentration	0.3 mg/ml
Formulation	50mM Tris-Glycine(pH 7.4), 0.15M NaCl, 40% Glycerol, 0.01% Sodium azide and 0.05% BSA
Storage	Store at 4°C short term. Aliquot and store at -20°C long term. Avoid freeze/thaw cycles.

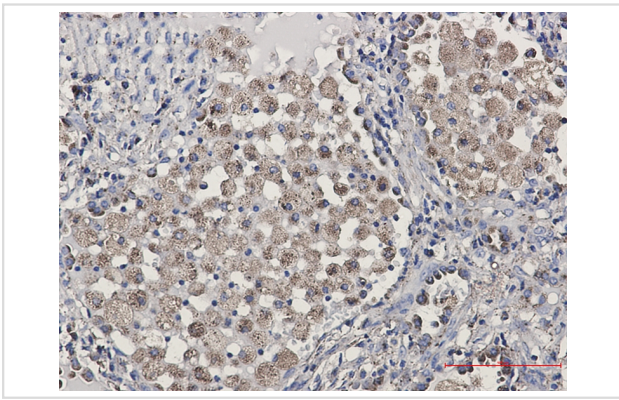
## Application Details

WB: 1/1000 IHC: 1/200

## Images



Western blot detection of LAMP2 in HeLa,A549,U2OS,U87-MG cell lysates using LAMP2 Rabbit mAb(1:1000 diluted).Predicted band size:45kDa.Observed band size:110kDa.



Immunohistochemistry of LAMP2 in paraffin-embedded Human lung cancer tissue using LAMP2 Rabbit mAb at dilution 1/50

## Background

Plays an important role in chaperone-mediated autophagy, a process that mediates lysosomal degradation of proteins in response to various stresses and as part of the normal turnover of proteins with a long biological half-life

Note: This product is for in vitro research use only