

## LMAN1 Rabbit mAb

Catalog No: #52791

Package Size: #52791-1 50ul #52791-2 100ul

Orders: order@signalwayantibody.com

Support: tech@signalwayantibody.com

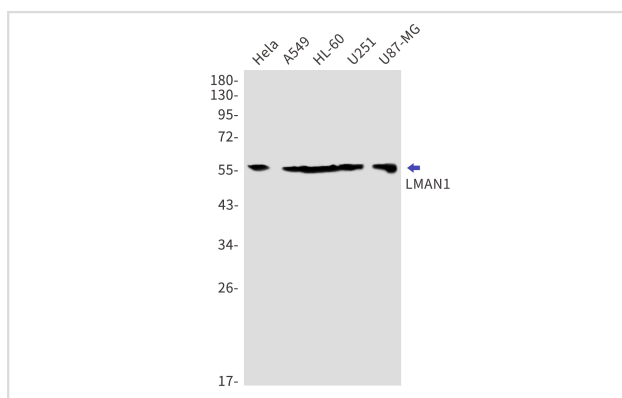
## Description

Product Name	LMAN1 Rabbit mAb
Host Species	Recombinant Rabbit
Clonality	Monoclonal antibody
Clone No.	S03-5C3
Isotype	IgG
Purification	Affinity Purified
Applications	WB IHC
Species Reactivity	Human,Mouse,Rat
Immunogen Description	A synthetic peptide of human LMAN1
Conjugates	Unconjugated
Modification	Unmodification
Other Names	MR60; gp58; F5F8D; FMFD1; MCFD1; ERGIC53; ERGIC-53
Accession No.	Swiss-Prot:P49257GenelD:3998
Uniprot	P49257
GenelD	3998
Calculated MW	Calculated MW:58 kDa,Observed MW:58 kDa
Concentration	0.3 mg/ml
Formulation	50mM Tris-Glycine(pH 7.4), 0.15M NaCl, 40% Glycerol, 0.01% Sodium azide and 0.05% BSA
Storage	Store at 4°C short term. Aliquot and store at -20°C long term. Avoid freeze/thaw cycles.

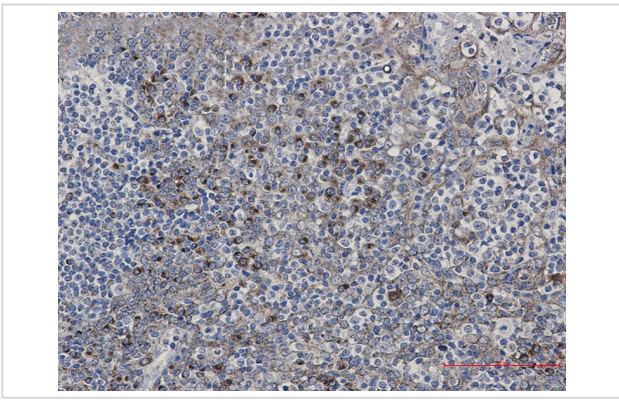
## Application Details

WB: 1/1000 IHC: 1/50

## Images



Western blot detection of LMAN1 in HeLa,A549,HL-60,U251,U87-MG cell lysates using LMAN1 Rabbit mAb(1:1000 diluted).Predicted band size:58kDa.Observed band size:58kDa.



Immunohistochemistry of LMN1 in paraffin-embedded Human tonsil using LMN1 Rabbit mAb at dilution 1/50

## Background

Mannose-specific lectin. May recognize sugar residues of glycoproteins, glycolipids, or glycosylphosphatidyl inositol anchors and may be involved in the sorting or recycling of proteins, lipids, or both. The LMN1-MCFD2 complex forms a specific cargo receptor for the ER-to-Golgi transport of selected proteins.

Note: This product is for in vitro research use only